



Price
£850,000

Freehold

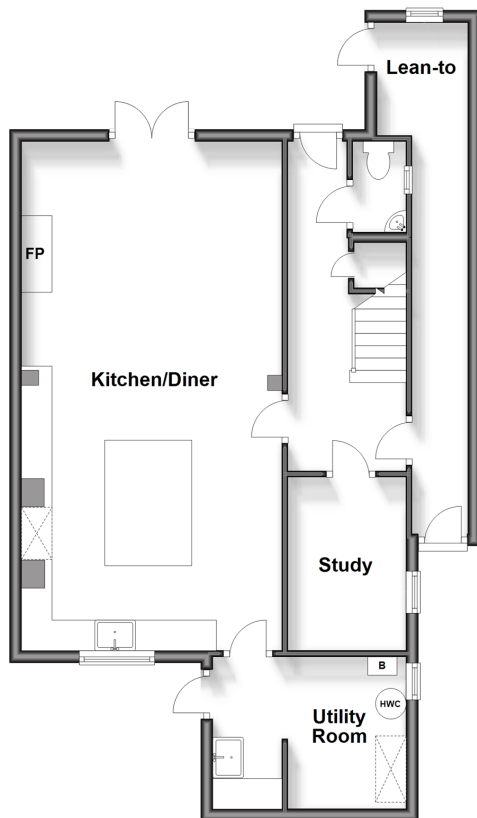
5x  2x  3x 

**St. Margaret's Street,
Rochester, Kent, ME1**

Wards
Helping you move forwards

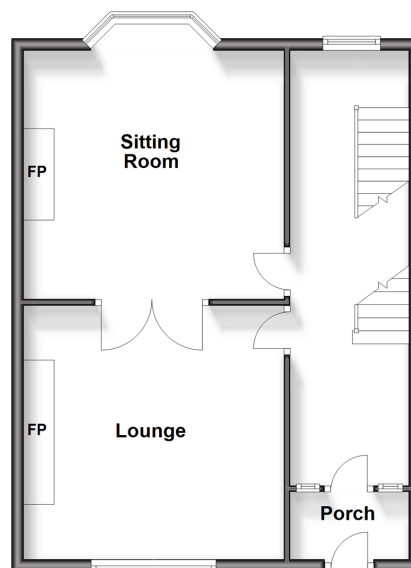
Lower Ground Floor

Approx. 69.9 sq. metres (752.6 sq. feet)



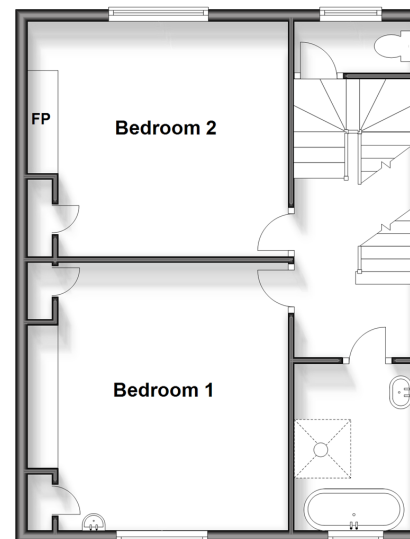
Ground Floor

Approx. 52.6 sq. metres (566.3 sq. feet)



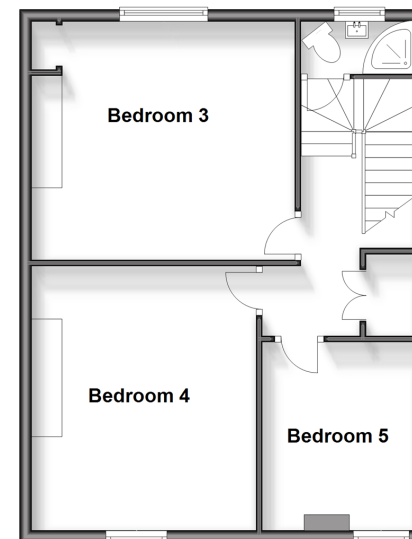
First Floor

Approx. 52.4 sq. metres (563.5 sq. feet)



Second Floor

Approx. 52.4 sq. metres (563.5 sq. feet)



Accommodation

GROUND FLOOR

Porch
Entrance Hall
Lounge: 14'2 x 13'9 (4.32m x 4.19m)
Sitting Room: 16'6 x 14'2 (5.03m x 4.32m)

LOWER GROUND FLOOR

Hallway
Cloakroom
Kitchen/Diner: 27'7 x 14'1 (8.41m x 4.30m)
Study: 9'2 x 6'0 (2.80m x 1.83m)
Utility Room
Lean-to

FIRST FLOOR

Landing
Cloakroom
Bedroom 1: 14'1 x 13'11 (4.30m x 4.24m)
Bedroom 2: 13'10 x 13'3 (4.22m x 4.04m)
Bathroom: 8'8 x 6'0 (2.64m x 1.83m)

SECOND FLOOR

Landing
Bedroom 3: 14'2 x 13'10 (4.32m x 4.22m)
Bedroom 4: 13'10 x 11'11 (4.22m x 3.63m)
Bedroom 5: 9'11 x 8'4 (3.02m x 2.54m)
Shower Room

OUTSIDE

Front and Rear Garden
Off-Road Parking



Main features

- Located in one of Rochester's most prestigious roads
- Spread over 4 floors with an abundance of space
- Stunning panoramic views of the River Medway
- Close to the historic High Street with high speed train station
- Off-road parking



Nearest Schools

Primary Schools: St Margaret's at Troy Town CofE Voluntary Controlled Primary 0.3 miles

Secondary Schools: St Andrew's School 40 feet, King's School, Rochester 0.4 miles



Transport Information

Train Stations: Rochester 0.9 miles, Strood 1.2 miles, Chatham 1.3 miles



Address

St. Margaret's Street, Rochester, Kent, ME1



Directions

For directions to this property please contact us.



Call Rochester Branch 01634 830925 ■ wardsofkent.co.uk



■ Legal advice should be taken to verify fixtures/fittings, planning, alterations and/or lease details ■ Appliances & services are untested, dimensions are approximate and floor plans are not to scale



11529727/20240409/DG/AB