



Price
£475,000

Freehold

3x  1x  2x 

**Coachmans Mews, Crow
Lane, Rochester, Kent,
ME1**

OVER 60?

Secure this property
for up to **59% less!**

Wards
Helping you move forwards



Main features

- Situated in a conservation area in a prestigious location
- Unique and rarely available with views of the castle and cathedral
- Private rear garden
- Secure gated off-road parking
- Sold chain free to assist a quick transaction

Accommodation

GROUND FLOOR

Hallway
 Kitchen/Breakfast Room: 15'7 x 10'6 (4.75m x 3.20m)
 Dining Room (Bedroom 4): 13'9 x 8'3 (4.19m x 2.52m)

FIRST FLOOR

Landing
 Lounge: 15'6 x 14'1 (4.73m x 4.30m)
 Bedroom 3 : 13'11 x 7'3 (4.24m x 2.21m)
 Bathroom: 13'10 x 5'6 (4.22m x 1.68m)

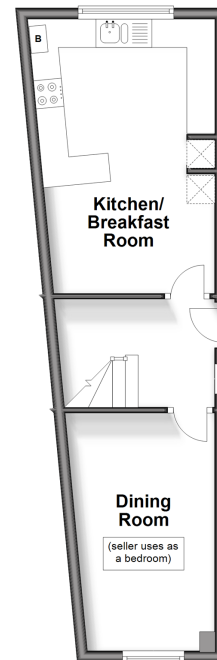
SECOND FLOOR

Landing
 Bedroom 1: 13'7 x 11'7 (4.14m x 3.53m)
 Bedroom 2: 13'5 x 10'6 (4.09m x 3.20m)

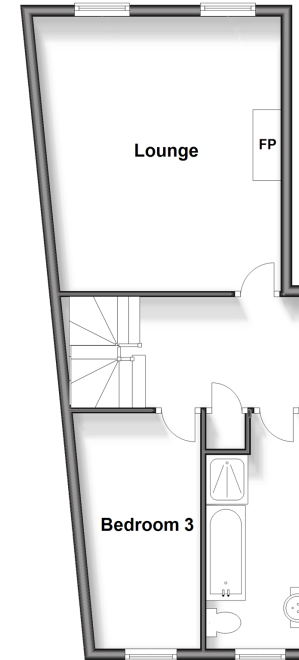
OUTSIDE

Rear Garden
 Off-Road Parking
 Garden Shed

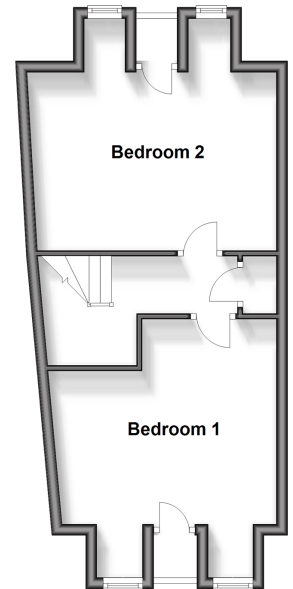
Ground Floor
 Approx. 20.7 sq. metres (222.7 sq. feet)



First Floor
 Approx. 45.9 sq. metres (493.8 sq. feet)



Second Floor
 Approx. 36.3 sq. metres (390.5 sq. feet)



Call Rochester - 01634 830925 ■ wardsof Kent.co.uk

■ Legal advice should be taken to verify fixtures/fittings, planning, alterations and/or lease details
 ■ Through a Homewise Home For Life Plan people aged 60+ can secure this property for up to 59% less, by purchasing a Lifetime Lease.

■ Appliances & services are untested, dimensions are approximate and floor plans are not to scale



11529711/20240313/DG/AB