



Price
£475,000

Freehold

4x  2x  2x 

**Haredale Close,
Rochester, Kent, ME1**

OVER 60?

Secure this property
for up to **59% less!**

Wards
Helping you move forwards



Main features

- Situated in a sought after location surrounded by great schools
- Downstairs cloakroom
- Secluded landscaped rear garden
- Large kitchen ideal for entertaining and a conservatory
- Garage and off-road parking

Accommodation

GROUND FLOOR

- Hallway
- Cloakroom: 6'5 x 2'10 (1.96m x 0.86m)
- Lounge : 15'0 x 12'3 (4.58m x 3.74m)
- Dining Room: 10'10 x 9'6 (3.30m x 2.90m)
- Conservatory: 10'11 x 10'3 (3.33m x 3.13m)
- Kitchen: 16'10 x 10'5 (5.13m x 3.18m)

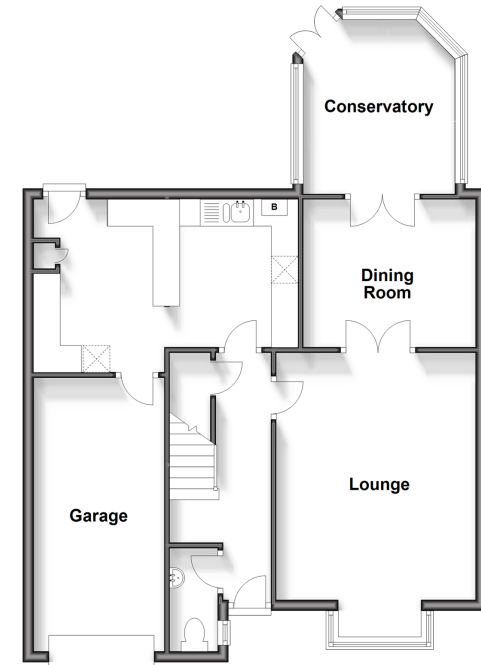
FIRST FLOOR

- Landing
- Bedroom 1: 14'6 x 12'7 (4.42m x 3.84m)
- En-suite Shower Room: 6'10 x 3'8 (2.08m x 1.12m)
- Bedroom 2: 12'6 x 9'7 (3.81m x 2.92m)
- Bedroom 3: 15'10 x 8'0 (4.83m x 2.44m)
- Store Room
- Bedroom 4: 7'1 x 6'8 (2.16m x 2.03m)
- Bathroom: 6'7 x 6'1 (2.01m x 1.86m)

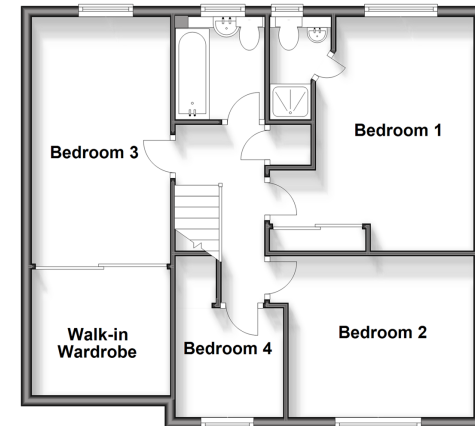
OUTSIDE

- Garage and Off-road Parking
- Rear Garden

Ground Floor
Approx. 74.2 sq. metres (798.7 sq. feet)



First Floor
Approx. 60.4 sq. metres (649.7 sq. feet)



Call Rochester - 01634 830925 ■ wardsofkent.co.uk

- Legal advice should be taken to verify fixtures/fittings, planning, alterations and/or lease details
- Appliances & services are untested, dimensions are approximate and floor plans are not to scale
- Through a Homewise Home For Life Plan people aged 60+ can secure this property for up to 59% less, by purchasing a Lifetime Lease.



11519619/20240224/DG/AB