



**Price**  
**£250,000**

**Leasehold**

2x  2x  1x 

**Kings Mews, Crow Lane,  
Rochester, Kent, ME1**

**OVER 60?**

Secure this property  
for up to **59% less!**

*Wards*  
Helping you move forwards





## Main features

- Ideal first time buy or investment opportunity!
- Private gated mews
- 2 allocated parking spaces
- A stone's throw to historic High Street and high speed train station
- Chain free

## Accommodation

### SPLIT LEVEL FIRST FLOOR

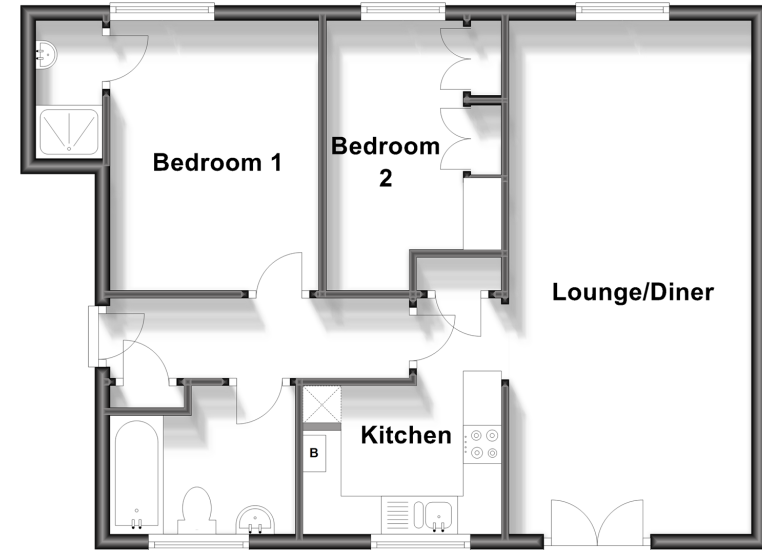
- Hallway
- Bedroom 1: 10'10 x 8'6 (3.30m x 2.59m)
- En-suite Shower Room
- Bedroom 2: 10'10 x 7'3 (3.30m x 2.21m)
- Lounge/Diner: 21'10 x 9'10 (6.66m x 3.00m)
- Kitchen: 9'2 x 6'3 (2.80m x 1.91m)
- Bathroom: 10'0 x 6'3 (3.05m x 1.91m)

### OUTSIDE

- 2 allocated parking spaces

### Split Level First Floor

Approx. 58.5 sq. metres (629.6 sq. feet)



Call Rochester - 01634 830925 ■ [wardsofkent.co.uk](http://wardsofkent.co.uk)

- Legal advice should be taken to verify fixtures/fittings, planning, alterations and/or lease details
- Through a Homewise Home For Life Plan people aged 60+ can secure this property for up to 59% less, by purchasing a Lifetime Lease.

- Appliances & services are untested, dimensions are approximate and floor plans are not to scale



11529441/20240813/AB/AB