



Guide Price
£600,000

Freehold

3x  2x  3x 

**Monkton Road, Minster,
Ramsgate, Kent, CT12**

OVER 60?

Secure this property
for up to **59% less!**

Wards
Helping you move forwards

Accommodation

GROUND FLOOR

Porch

Entrance Hallway

Lounge : 14'5 x 11'9 (4.40m x 3.58m)

Dining Room : 14'7 x 11'9 (4.45m x 3.58m)

Kitchen/Breakfast Room : 25'5 x 10'6
(7.75m x 3.20m)

Utility Room : 7'3 x 6'4 (2.21m x 1.93m)

Cloakroom

Conservatory

BASEMENT

Basement Room : 17'6 x 14'3 (5.34m x 4.35m)

FIRST FLOOR

Landing

Bedroom 2 : 14'7 x 12'6 (4.45m x 3.81m)

Bedroom 3 : 12'9 x 12'3 (3.89m x 3.74m)

Bathroom

Bedroom 1 : 13'4 x 11'4 (4.07m x 3.46m)

En-Suite Shower Room

OUTBUILDING

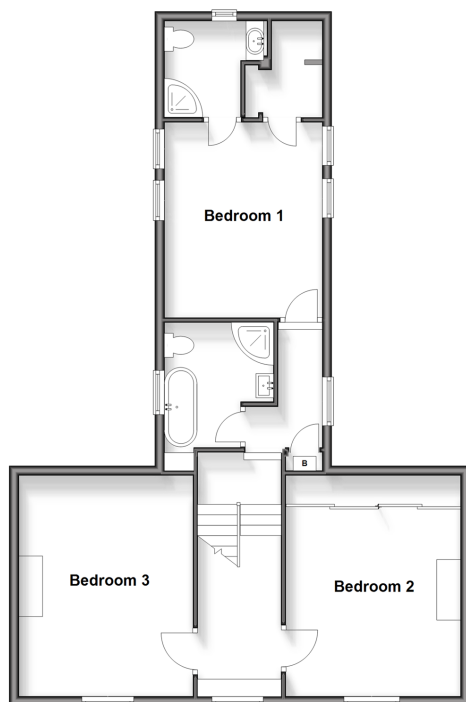
Double Garage

OUTSIDE

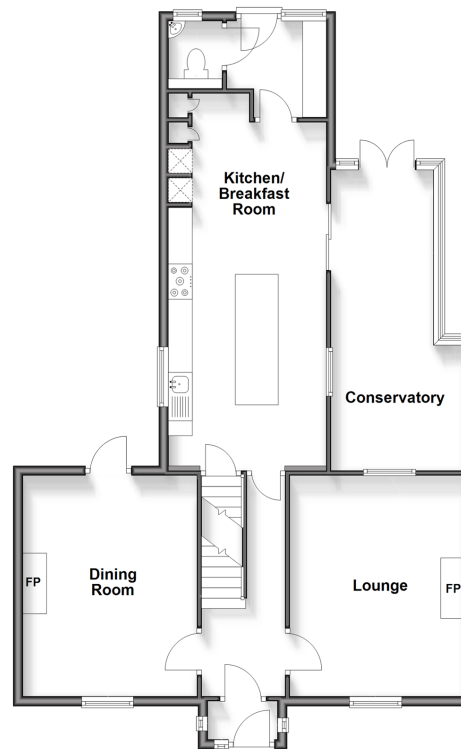
Off Road Parking

Garden to Front and Rear

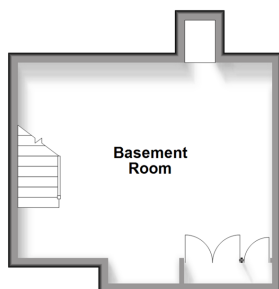
Split Level First Floor
Approx. 73.3 sq. metres (788.8 sq. feet)



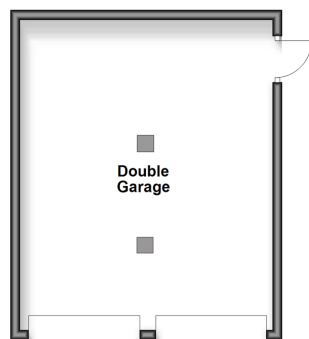
Ground Floor
Approx. 90.5 sq. metres (974.4 sq. feet)



Basement
Approx. 23.8 sq. metres (256.1 sq. feet)



Outbuilding
Approx. 34.0 sq. metres (365.8 sq. feet)





Main features

- Popular village location
- Full of charm and character throughout
- Spacious and bright conservatory
- Stunning rear garden, ample parking and a double garage
- Presented to an immaculate standard throughout; boasting the perfect family home



Nearest Schools

Primary Schools: Minster C of E Primary 0.3 miles, Monkton C of E Primary 1.3 miles, Birchington C of E Primary 2.8 miles
Secondary Schools: King Ethelbert School 3.9 miles, Clarendon & Chatham House Grammar School 4.4 miles,



Transport Information

Train Stations: Minster 0.5 miles, Birchington-On-Sea 3.4 miles, Westgate-on-Sea 4.3 miles



Address

Monkton Road, Minster, Ramsgate, Kent, CT12



Directions

For directions to this property please contact us.



Wards
Helping you move forwards

Call Ramsgate Branch 01843 580314 ■ wardsofkent.co.uk



- Legal advice should be taken to verify fixtures/fittings, planning, alterations and/or lease details
- Appliances & services are untested, dimensions are approximate and floor plans are not to scale
- Through a Homewise Home For Life Plan people aged 60+ can secure this property for up to 59% less, by purchasing a Lifetime Lease.



10121147/20250515/EVR/JR