



Price
£450,000

Freehold

4x  1x  2x 

**Crescent Road,
Ramsgate, Kent, CT11**

OVER 60?

Secure this property
for up to **59% less!**

Wards
Helping you move forwards

Accommodation

SPLIT LEVEL GROUND FLOOR

Entrance Hallway

Lounge : 14'7 x 12'3 (4.45m x 3.74m)

Dining Area: 11'2 x 10'2 (3.41m x 3.10m)

Kitchen : 12'8 x 10'2 (3.86m x 3.10m)

Utility Room: 10'5 x 5'7 (3.18m x 1.70m)

Cloakroom

BASEMENT

Cellar : 15'7 x 14'1 (4.75m x 4.30m)

SPLIT LEVEL FIRST FLOOR

Landing

Bedroom 1 : 16'5 x 14'8 (5.01m x 4.47m)

Bedroom 4: 11'1 x 8'2 (3.38m x 2.49m)

Bathroom

Cloakroom

SECOND FLOOR

Landing

Bedroom 2 : 16'3 x 10'9 (4.96m x 3.28m)

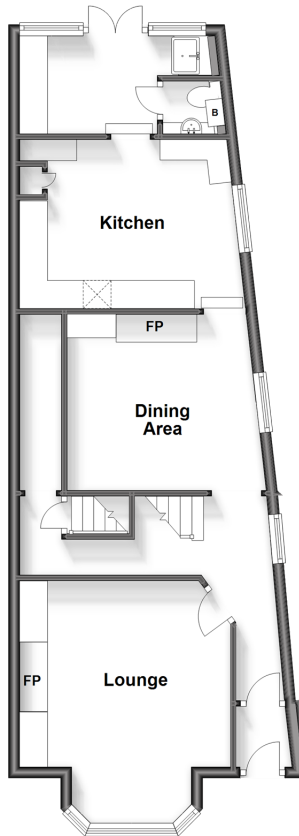
Bedroom 3: 12'2 x 9'7 (3.71m x 2.92m)

OUTSIDE

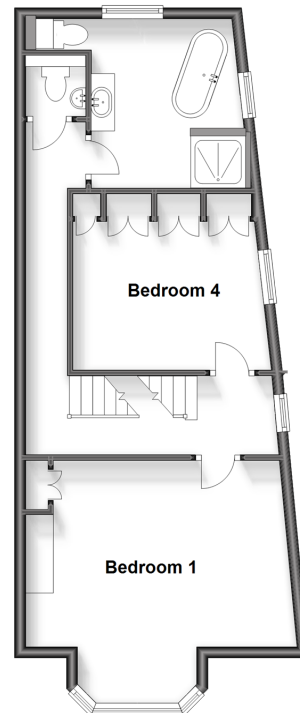
Garden to Front and Rear

Off Road Parking

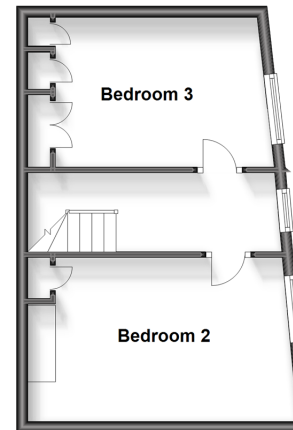
Split Level Ground Floor
Approx. 57.2 sq. metres (615.6 sq. feet)



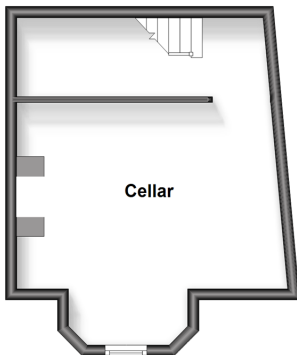
Split Level First Floor
Approx. 50.5 sq. metres (544.0 sq. feet)

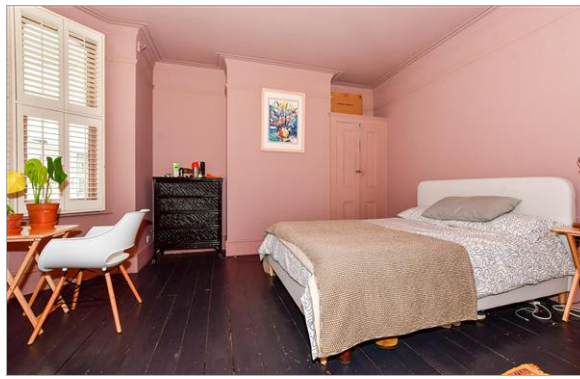


Second Floor
Approx. 32.5 sq. metres (349.5 sq. feet)



Basement
Approx. 24.6 sq. metres (264.6 sq. feet)





Main features

- Full of character and charm with many period features throughout
- Private low maintenance rear garden
- Off road parking
- Idyllic family home, with spacious living throughout
- Situated in a sought after location in Ramsgate, just a short walk to the town and train station



Nearest Schools

Primary Schools: Ramsgate, Christ Church C of E Junior School 0.5 miles, St Laurence in Thanet C of E Junior School 0.7 miles, St Ethelbert's Catholic Primary 1.1 miles
Secondary Schools: Clarendon and Chatham House Grammar School 0.4 miles,



Transport Information

Train Stations: Ramsgate 0.8 miles, Dumpton Park 1.6 miles, Broadstairs 3.1 miles



Address

Crescent Road, Ramsgate, Kent, CT11



Directions

For directions to this property please contact us.



Wards
Helping you move forwards

Call Ramsgate Branch 01843 580314 ■ wardsof Kent.co.uk



- A private rental licensing scheme applies to some properties in this area, please contact us before proceeding
- Appliances & services are untested, dimensions are approximate and floor plans are not to scale

- Legal advice should be taken to verify fixtures/fittings, planning, alterations and/or lease details
- Through a Homewise Home For Life Plan people aged 60+ can secure this property for up to 59% less, by purchasing a Lifetime Lease.



11432484/20231021/DL/JR