



Guide Price
£225,000

Freehold

2x  1x  2x 

**Leopold Road,
Ramsgate, Kent, CT11**

OVER 60?

Secure this property
for up to **59% less!**

Wards
Helping you move forwards



Main features

- Courtyard garden
- Well maintained throughout with a well finished kitchen and bathroom
- Jack and Jill bathroom
- Great catchment area for highly rated schools, shops and transport links
- Ideal first time buy, located in a popular residential area

Accommodation

GROUND FLOOR

Entrance Hallway

Lounge : 12'9 x 9'6 (3.89m x 2.90m)

Dining Room : 15'6 x 8'9 (4.73m x 2.67m)

Kitchen : 10'6 x 8'11 (3.20m x 2.72m)

FIRST FLOOR

Landing

Bedroom 1: 12'3 x 9'6 (3.74m x 2.90m)

Bathroom

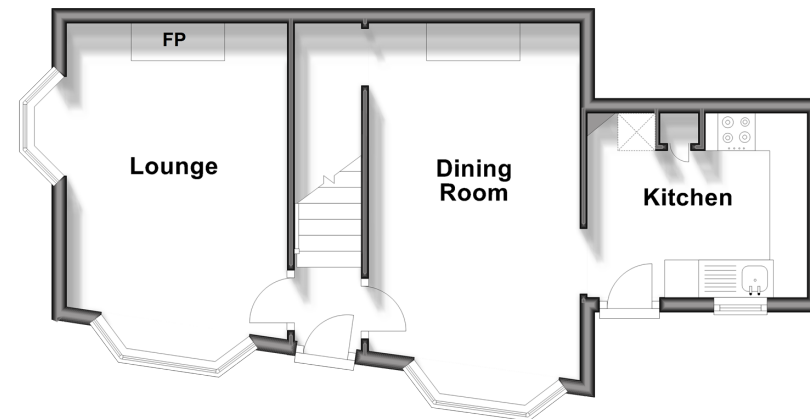
Bedroom 2 : 9'6 x 8'8 (2.90m x 2.64m)

OUTSIDE

Garden to Rear

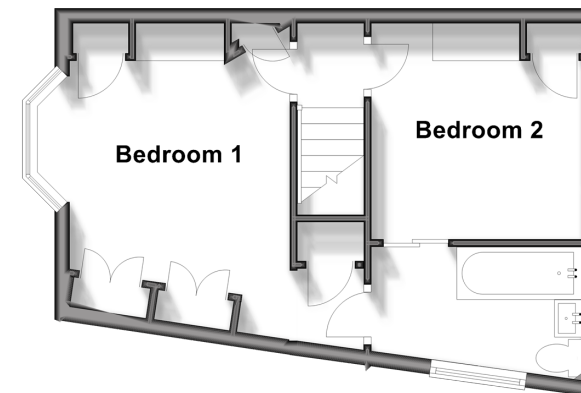
Split Level Ground Floor

Approx. 37.5 sq. metres (403.9 sq. feet)



First Floor

Approx. 29.6 sq. metres (318.9 sq. feet)



Call Ramsgate - 01843 580314 ■ wardsofkent.co.uk

- Legal advice should be taken to verify fixtures/fittings, planning, alterations and/or lease details
- Appliances & services are untested, dimensions are approximate and floor plans are not to scale
- Through a Homewise Home For Life Plan people aged 60+ can secure this property for up to 59% less, by purchasing a Lifetime Lease.



11432670/20250114/AP/JR