



**Price**  
**£375,000**

**Freehold**

3x  2x  3x 

**Southwood Gardens,  
Ramsgate, Kent, CT11**

*Wards*  
Helping you move forwards





## Main features

- Being sold with no-onward chain
- Located on a quiet cul-de-sac
- Off-road parking
- Ideal family home that is ready to move into
- Stunning rear garden, ideal for a keen gardener or entertaining visitors during the summer months

## Accommodation

### GROUND FLOOR

Entrance Hallway

Lounge : 11'9 x 11'8 (3.58m x 3.56m)

Dining Area: 10'4 x 10'2 (3.15m x 3.10m)

Kitchen : 10'6 x 8'2 (3.20m x 2.49m)

Sitting Area: 16'9 x 9'8 (5.11m x 2.95m)

Shower Room/Utility Room : 16'9 x 9'8 (5.11m x 2.95m)

### FIRST FLOOR

Landing

Bedroom 1: 11'8 x 10'6 (3.56m x 3.20m)

Bedroom 2 : 10'7 x 10'3 (3.23m x 3.13m)

Bedroom 3 : 8'8 x 7'9 (2.64m x 2.36m)

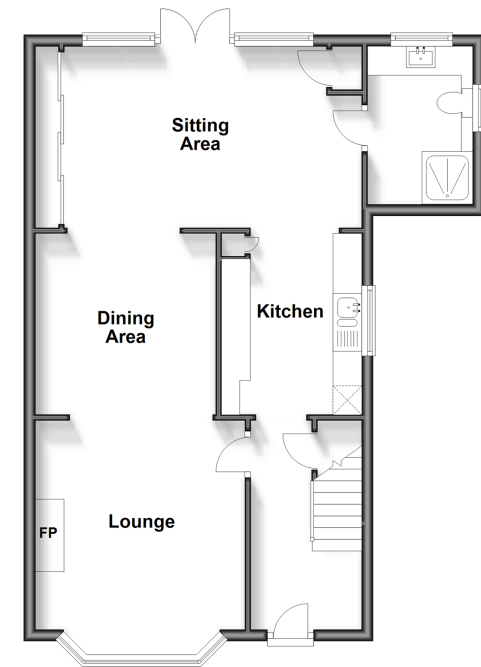
Bathroom

### OUTSIDE

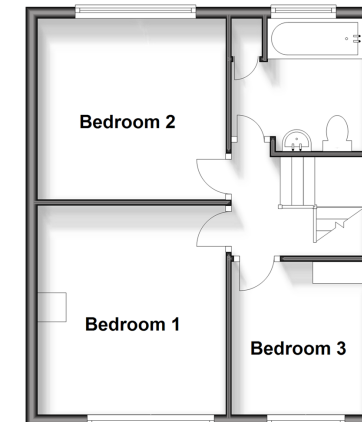
Garden to Front and Rear

Garage and Off Road Parking

**Ground Floor**  
Approx. 62.7 sq. metres (675.2 sq. feet)



**First Floor**  
Approx. 38.8 sq. metres (417.3 sq. feet)



**Call Ramsgate - 01843 580314 ■ [wardsokent.co.uk](http://wardsokent.co.uk)**

- Legal advice should be taken to verify fixtures/fittings, planning, alterations and/or lease details
- Appliances & services are untested, dimensions are approximate and floor plans are not to scale



11425398/20241023/DL/JR