



Price
£240,000

Leasehold

3x  2x  1x 

**Grange Road, Ramsgate,
Kent, CT11**

OVER 60?

Secure this property
for up to **59% less!**

Wards
Helping you move forwards



Main features

- Full of character and charm, this can be seen in the fantastic bathroom
- Well proportioned rooms throughout
- Recently refurbished kitchen
- Beautiful period features including cornicing and ceiling roses
- Located close to shops, schools and transport links

Accommodation

FIRST FLOOR

Entrance Hallway

Lounge : 16'10 x 14'6 (5.13m x 4.42m)

Kitchen : 12'0 x 10'10 (3.66m x 3.30m)

Study: 6'8 x 3'0 (2.03m x 0.92m)

SECOND FLOOR

Landing

Bedroom 1 : 13'8 x 11'6 (4.17m x 3.51m)

Shower Room : 6'2 x 5'1 (1.88m x 1.55m)

Bathroom : 11'8 x 7'11 (3.56m x 2.41m)

THIRD FLOOR

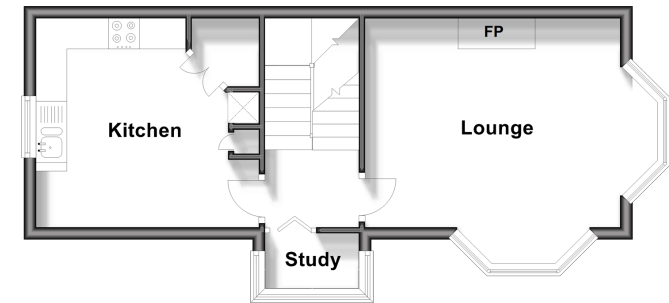
Landing

Bedroom 2 : 11'10 x 6'9 (3.61m x 2.06m)

Bedroom 3 : 13'4 x 11'2 (4.07m x 3.41m)

First Floor

Approx. 34.5 sq. metres (371.2 sq. feet)



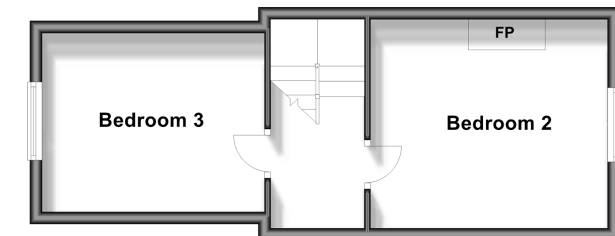
Second Floor

Approx. 32.4 sq. metres (348.5 sq. feet)



Third Floor

Approx. 29.6 sq. metres (318.2 sq. feet)



Call Ramsgate - 01843 580314 ■ wardsokent.co.uk

- A private rental licensing scheme applies to some properties in this area, please contact us before proceeding
- Legal advice should be taken to verify fixtures/fittings, planning, alterations and/or lease details
- Appliances & services are untested, dimensions are approximate and floor plans are not to scale
- Through a Homewise Home For Life Plan people aged 60+ can secure this property for up to 59% less, by purchasing a Lifetime Lease.



11434517/20240906/DL/BW