



Price
£300,000

Freehold

4x  3x  1x 

**Sycamore Grange,
Ramsgate, Kent, CT11**

Wards
Helping you move forwards



Main features

- Ideal for a growing family or investment opportunity
- Located close to great transport links just moments away
- Being sold with no onward chain
- Garage and off street parking
- Sunny aspect private rear garden

Accommodation

GROUND FLOOR

Entrance Hallway
 Bedroom 4: 13'3 x 8'5 (4.04m x 2.57m)
 Shower Room

FIRST FLOOR

Hallway
 Lounge : 14'4 x 11'9 (4.37m x 3.58m)
 Dining Area: 9'8 x 7'6 (2.95m x 2.29m)
 Kitchen : 14'6 x 7'8 (4.42m x 2.34m)

SECOND FLOOR

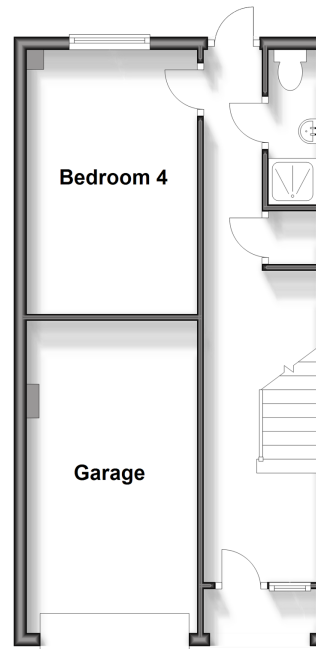
Bedroom 1: 12'5 x 10'4 (3.79m x 3.15m)
 En-Suite : 5'5 x 5'2 (1.65m x 1.58m)
 Bathroom
 Bedroom 2: 10'7 x 5'7 (3.23m x 1.70m)
 Bedroom 3: 8'7 x 7'9 (2.62m x 2.36m)

OUTSIDE

Off Road Parking
 Garden to Rear
 Integral Garage

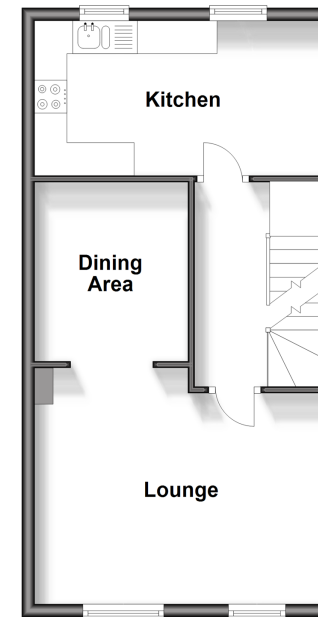
Ground Floor

Approx. 38.2 sq. metres (411.4 sq. feet)



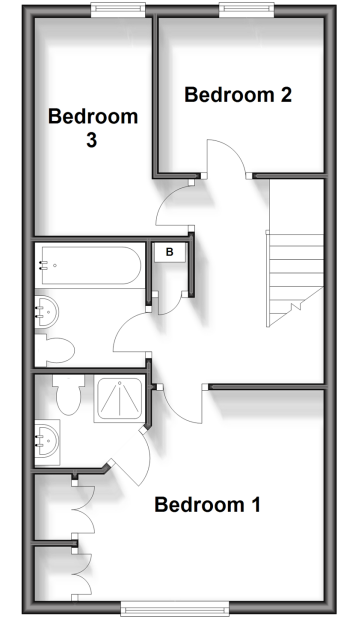
First Floor

Approx. 39.6 sq. metres (426.7 sq. feet)



Second Floor

Approx. 39.6 sq. metres (426.7 sq. feet)



Call Ramsgate - 01843 580314 ■ wardsofkent.co.uk

■ Legal advice should be taken to verify fixtures/fittings, planning, alterations and/or lease details

■ Appliances & services are untested, dimensions are approximate and floor plans are not to scale



11434508/20240925/DL/NW