



Guide Price
£200,000

Freehold

2x  1x  1x 

**Ivy Lane, Ramsgate,
Kent, CT11**

Wards
Helping you move forwards



Main features

- Courtyard garden
- Located just moments from beautiful views of the Royal Harbour, town centre and a variety of amenities
- Being sold with no onward chain
- Arranged over three floors
- Ideal investment or first time buy

Accommodation

GROUND FLOOR

Entrance Hallway

Lounge: 9'5 x 9'0 (2.87m x 2.75m)

Cloakroom

Kitchen: 8'8 x 8'3 (2.64m x 2.52m)

FIRST FLOOR

Landing

Bathroom: 9'8 x 5'3 (2.95m x 1.60m)

Bedroom 1: 12'6 x 9'5 (3.81m x 2.87m)

SECOND FLOOR

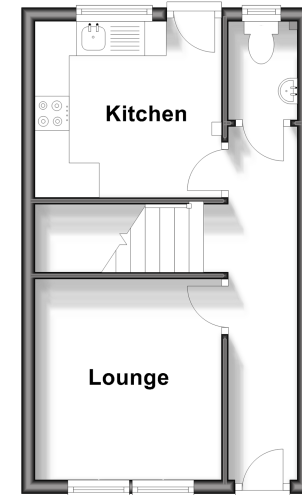
Bedroom 2: 14'6 x 12'6 (4.42m x 3.81m)
narrowing to 6'7 x 4'7 (2.01m x 1.40m)

OUTSIDE

Courtyard Rear Garden

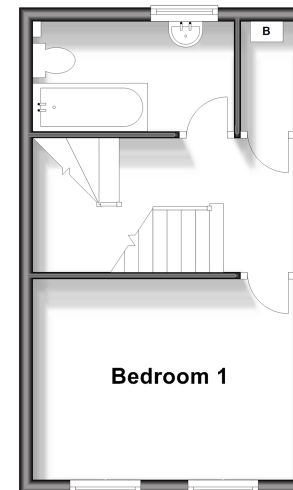
Ground Floor

Approx. 25.6 sq. metres (275.7 sq. feet)



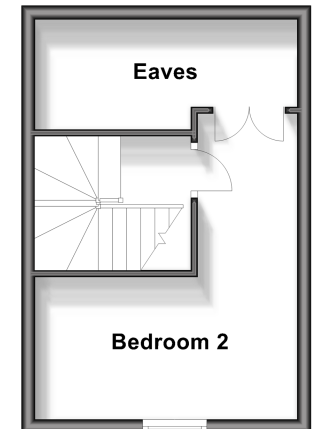
First Floor

Approx. 25.6 sq. metres (275.7 sq. feet)



Second Floor

Approx. 22.3 sq. metres (240.5 sq. feet)



Call Ramsgate - 01843 580314 ■ wardsokent.co.uk

- Legal advice should be taken to verify fixtures/fittings, planning, alterations and/or lease details
- Appliances & services are untested, dimensions are approximate and floor plans are not to scale



11433902/20241014/AP/NW