



Guide Price
£140,000

Leasehold

2x  2x  1x 

**Meridian Close,
Ramsgate, Kent, CT12**

Wards
Helping you move forwards



Main features

- **Second floor purpose built apartment**
- **Large open plan kitchen/lounge area perfect for entertaining friends and family**
- **Cash buyers only**
- **Benefiting from an allocated parking space**
- **No onward chain**

Accommodation

SECOND FLOOR

Entrance Hallway

Kitchen/Lounge: 19'5 x 13'4 (5.92m x 4.07m)

Bathroom : 7'6 x 6'8 (2.29m x 2.03m)

Bedroom 2: 10'9 x 9'0 (3.28m x 2.75m)

Bedroom 1 : 14'7 x 11'3 (4.45m x 3.43m)

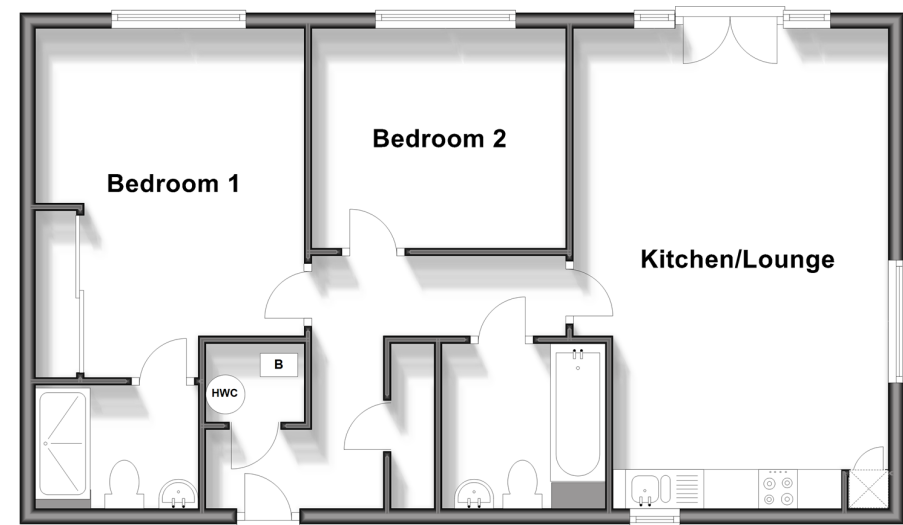
En-Suite Shower Room : 6'6 x 5'1 (1.98m x 1.55m)

OUTSIDE

Allocated Parking Space

Second Floor

Approx. 67.1 sq. metres (722.1 sq. feet)



Call Ramsgate - 01843 580314 ■ wardsokent.co.uk

- A private rental licensing scheme applies to some properties in this area, please contact us before proceeding
- Legal advice should be taken to verify fixtures/fittings, planning, alterations and/or lease details
- Appliances & services are untested, dimensions are approximate and floor plans are not to scale



11431918/20240427/DL/JR