



OVER 60?

Secure this property
for up to **59% less!**

Guide Price
£550,000

Freehold

5x  4x  2x 

**Dumpton Park Drive,
Ramsgate, Kent, CT11**

Wards
Helping you move forwards

Accommodation

GROUND FLOOR

Entrance Hallway

Cloakroom

Study: 11'3 x 9'2 (3.43m x 2.80m)

Lounge : 17'9 x 12'8 (5.41m x 3.86m)

Kitchen/Breakfast Room : 27'5 x 9'1 (8.36m x 2.77m)

Dining Area : 10'0 x 9'7 (3.05m x 2.92m)

FIRST FLOOR

Landing

Bedroom 3: 11'3 x 9'4 (3.43m x 2.85m)

Balcony

Bathroom: 10'9 x 9'1 (3.28m x 2.77m)

Living Area: 27'5 x 12'5 (8.36m x 3.79m)

Balcony

Bedroom 1 : 12'2 x 9'8 (3.71m x 2.95m)

En-Suite Shower Room: 7'4 x 5'3 (2.24m x 1.60m)

Dressing Area

SECOND FLOOR

Landing

Bedroom 2 : (L-shaped) 22'6 x 21'3 (6.86m x 6.48m) plus 12'5 x 6'8 (3.79m x 2.03m)

En-Suite Shower Room: 5'6 x 5'2 (1.68m x 1.58m)

Bedroom 4 : 11'3 x 10'8 (3.43m x 3.25m)

Bedroom 5 : 9'8 x 9'5 (2.95m x 2.87m)

Bathroom: 7'3 x 5'7 (2.21m x 1.70m)

OUTSIDE

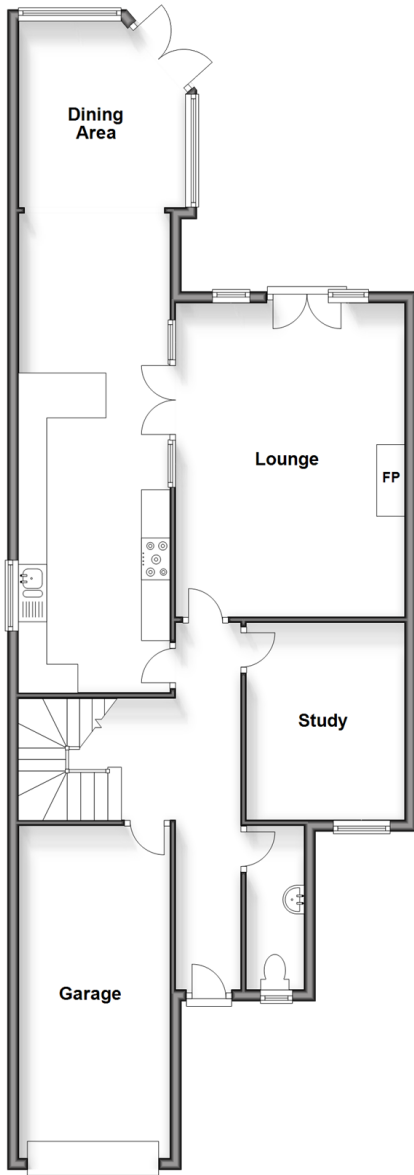
Garage with Utility Area

Off Road Parking

Garden to Rear

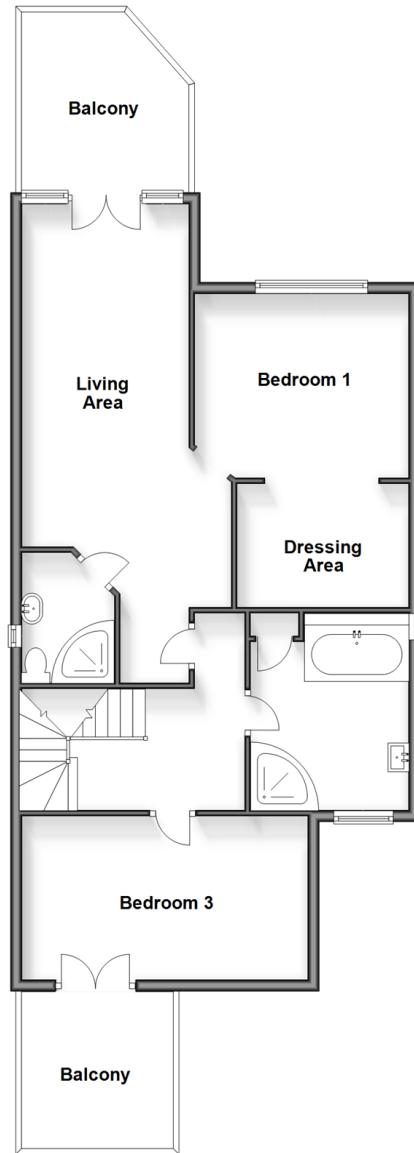
Ground Floor

Approx. 97.5 sq. metres (1049.3 sq. feet)



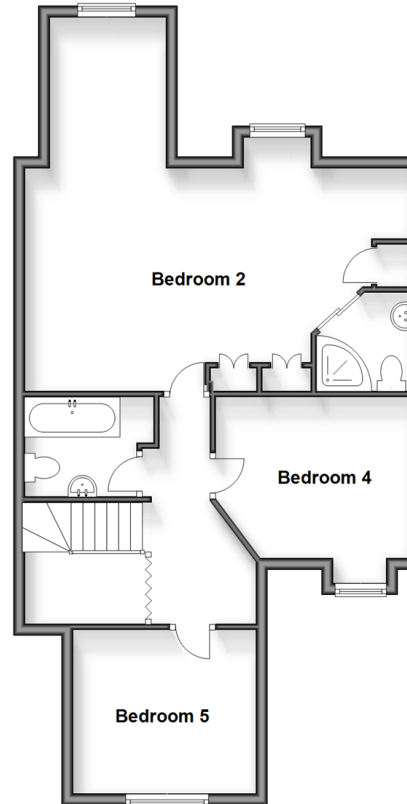
First Floor

Approx. 81.0 sq. metres (871.8 sq. feet)



Second Floor

Approx. 67.0 sq. metres (721.5 sq. feet)





Main features

- Off road parking for multiple cars
- Two balconies and sea views from the second floor
- Prestigious family home
- Generous sized living throughout, set across 3 floors with a beautifully presented rear garden
- Just a short walk from the highly desirable East Cliff which has stunning views of the English Channel



Nearest Schools

Primary Schools: St Ethelbert's Catholic Primary 0.2 miles, Ramsgate, Holy Trinity C of E Primary 0.5 miles, Newlands Primary 0.5 miles
Secondary Schools: St Lawrence College 0.6 miles, Clarendon and Chatham House Grammar School.



Transport Information

Train Stations: Dumpton Park 0.4 miles, Ramsgate 0.9 miles, Broadstairs 1.4 miles



Address

Dumpton Park Drive, Ramsgate, Kent, CT11



Directions

For directions to this property please contact us.



Wards
Helping you move forwards

Call Ramsgate Branch 01843 580314 ■ wardsofkent.co.uk



- A private rental licensing scheme applies to some properties in this area, please contact us before proceeding
- Appliances & services are untested, dimensions are approximate and floor plans are not to scale

- Legal advice should be taken to verify fixtures/fittings, planning, alterations and/or lease details
- Through a Homewise Home For Life Plan people aged 60+ can secure this property for up to 59% less, by purchasing a Lifetime Lease.



11434168/20240617/AP/JR