



OVER 60?

Secure this property
for up to **59% less!**

Price
£325,000

Freehold

3x  1x  1x 

**Warlingham Close,
Rainham, Gillingham,
Kent, ME8**

Wards
Helping you move forwards



Main features

- A beautifully presented property that would make a great first home
- Stylish and modern 15ft open plan kitchen/breakfast room
- Spacious 15ft lounge with attractive feature bay window
- Landscaped rear garden
- Useful garage en-bloc
- Close to shops and mainline station

Accommodation

GROUND FLOOR

Kitchen/Breakfast Room : 15'8 x 11'6 (4.78m x 3.51m)

Lounge : 15'8 x 13'6 into bay (4.78m x 4.12m)

FIRST FLOOR

Landing

Bedroom 1 : 13'1 x 9'0 (3.99m x 2.75m)

Bedroom 2 : 8'6 x 8'5 (2.59m x 2.57m)

Bedroom 3 : 8'4 x 6'7 (2.54m x 2.01m)

Bathroom

OUTSIDE

Front Garden

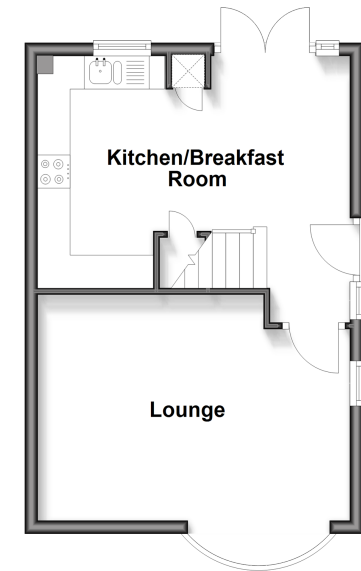
Side Garden

Rear Garden

Garage En-Bloc

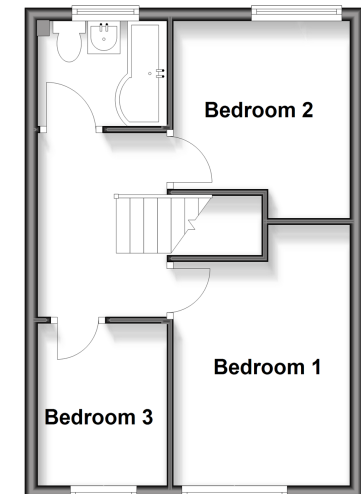
Ground Floor

Approx. 34.1 sq. metres (367.5 sq. feet)



First Floor

Approx. 33.8 sq. metres (363.6 sq. feet)



Call Rainham - 01634 373531 ■ wardsofkent.co.uk

- Legal advice should be taken to verify fixtures/fittings, planning, alterations and/or lease details
- Appliances & services are untested, dimensions are approximate and floor plans are not to scale
- Through a Homewise Home For Life Plan people aged 60+ can secure this property for up to 50% less, by purchasing a Lifetime Lease.



11339138/20251024/DW/DW