



Guide Price
£400,000

Freehold

3x  2x  1x 

**Bloors Lane, Rainham,
Gillingham, Kent, ME8**

OVER 60?

Secure this property
for up to **59% less!**

Wards
Helping you move forwards



Main features

- Beautiful family home
- Boasts spacious and flexible accommodation with an impressive open plan kitchen/dining area
- Ample parking with an integral garage
- Generous rear garden
- Situated in a central location close to all amenities

Accommodation

GROUND FLOOR

Lounge : 18'2 x 12'6 (5.54m x 3.81m)
 Kitchen/Dining Area: 17'5 x 16'3 (5.31m x 4.96m)
 Family Area : 12'5 x 9'8 (3.79m x 2.95m)
 Utility Room: 8'5 x 4'11 (2.57m x 1.50m)
 Downstairs Shower Room

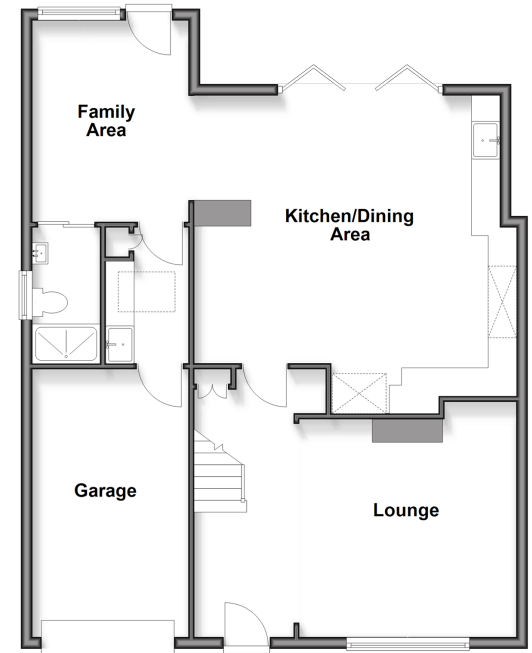
FIRST FLOOR

Landing
 Bedroom 1 : 12'8 x 9'10 (3.86m x 3.00m)
 Bedroom 2 : 10'11 x 10'5 (3.33m x 3.18m)
 Bedroom 3 : 9'4 x 8'2 (2.85m x 2.49m)
 Bathroom

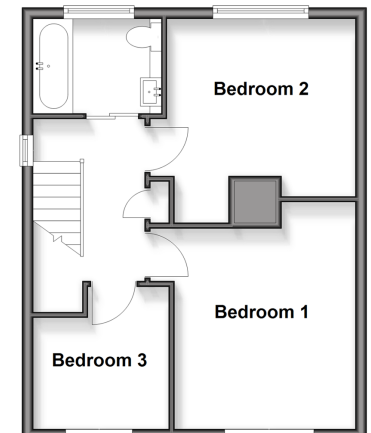
OUTSIDE

Front Garden
 Rear Garden
 Integral Garage
 Driveway

Ground Floor
 Approx. 84.4 sq. metres (908.5 sq. feet)



First Floor
 Approx. 41.0 sq. metres (441.5 sq. feet)



Call Rainham - 01634 373531 ■ wardsofkent.co.uk

- Legal advice should be taken to verify fixtures/fittings, planning, alterations and/or lease details
- Appliances & services are untested, dimensions are approximate and floor plans are not to scale
- Through a Homewise Home For Life Plan people aged 60+ can secure this property for up to 50% less, by purchasing a Lifetime Lease.



11339017/20251021/NJ/NJ