



Price
£265,000

Freehold

2x  1x  1x 

**Playstool Close,
Newington,
Sittingbourne, Kent,
ME9**

OVER 60?

Secure this property
for up to **59% less!**

Wards
Helping you move forwards



Main features

- A deceptively spacious property that would be a great first home
- Open plan modern kitchen/dining area and useful conservatory
- Generous rear garden
- Potential for a driveway subject to planning
- Popular village location
- No forward chain

Accommodation

GROUND FLOOR

Entrance Hall

Lounge : 13'6 x 12'4 (4.12m x 3.76m)

Kitchen/Dining Area : 16'6 x 8'8 (5.03m x 2.64m)

Conservatory : 9'0 x 8'5 (2.75m x 2.57m)

FIRST FLOOR

Landing

Bedroom 1 : 13'7 x 10'4 (4.14m x 3.15m)

Bedroom 2 : 11'3 x 11'0 (3.43m x 3.36m)

Bathroom

OUTSIDE

Front Garden

Rear Garden

Workshop: 11'1 x 6'8 (3.38m x 2.03m)

Brick Built Building : 7'1 x 6'0 (2.16m x 1.83m)

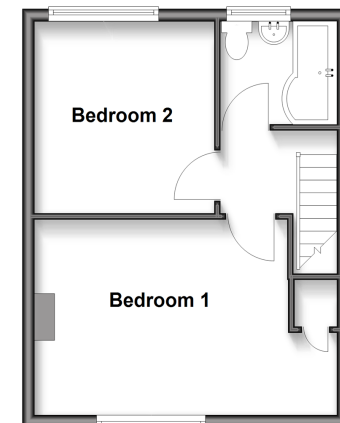
Ground Floor

Approx. 39.1 sq. metres (420.9 sq. feet)



First Floor

Approx. 31.5 sq. metres (339.4 sq. feet)



Call Rainham - 01634 373531 ■ wardsofkent.co.uk

- Legal advice should be taken to verify fixtures/fittings, planning, alterations and/or lease details
- Appliances & services are untested, dimensions are approximate and floor plans are not to scale
- Through a Homewise Home For Life Plan people aged 60+ can secure this property for up to 59% less, by purchasing a Lifetime Lease.



11338943/20250716/JSS/DW