



**OVER 60?**

Secure this property  
for up to **59% less!**

**Price**  
**£325,000**

**Freehold**

5x  1x  1x 

**Beverley Close,  
Rainham, Gillingham,  
Kent, ME8**

*Wards*  
Helping you move forwards





## Main features

- Beautifully presented family home
- Modern throughout with spacious flexible accommodation
- Useful utility room and downstairs cloakroom
- Ample parking on the driveway
- Low maintenance rear garden
- Situated in a central location near to shops, schools and the amenities

## Accommodation

### GROUND FLOOR

Lounge: 14'6 x 13'0 (4.42m x 3.97m)  
 Kitchen: 11'0 x 11'0 (3.36m x 3.36m)  
 Utility Room : 5'8 x 3'2 (1.73m x 0.97m)  
 Downstairs Cloakroom

### FIRST FLOOR

Landing  
 Bedroom 2: 14'8 x 10'1 (4.47m x 3.08m)  
 Dressing Area : 5'9 x 5'6 (1.75m x 1.68m)  
 Bedroom 4 : 10'11 x 7'4 (3.33m x 2.24m)  
 Bathroom

### SECOND FLOOR

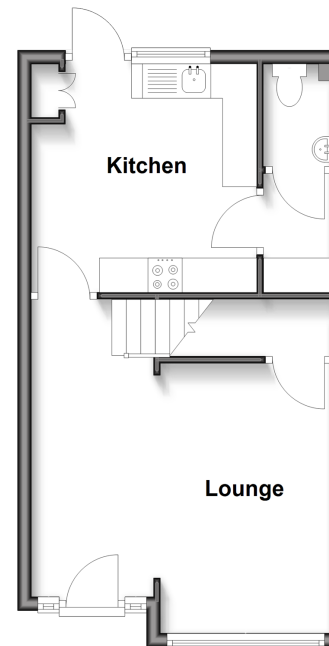
Landing  
 Bedroom 1: 14'5 x 10'1 (4.40m x 3.08m)  
 Bedroom 3 : 14'5 x 8'4 (4.40m x 2.54m)  
 Bedroom 5 : 11'7 x 5'11 (3.53m x 1.80m)

### OUTSIDE

Rear Garden  
 Driveway

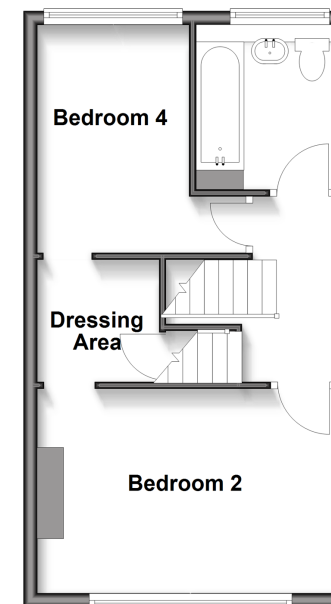
### Ground Floor

Approx. 35.3 sq. metres (380.2 sq. feet)



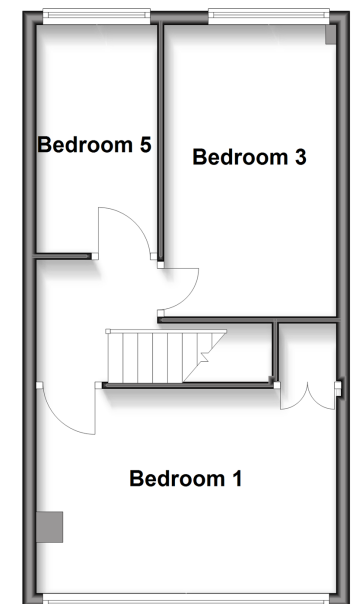
### First Floor

Approx. 36.1 sq. metres (389.0 sq. feet)



### Second Floor

Approx. 36.3 sq. metres (391.0 sq. feet)



Call Rainham - 01634 373531 ■ [wardsofkent.co.uk](http://wardsofkent.co.uk)

■ Legal advice should be taken to verify fixtures/fittings, planning, alterations and/or lease details  
 ■ Through a Homewise Home For Life Plan people aged 60+ can secure this property for up to 59% less, by purchasing a Lifetime Lease.

■ Appliances & services are untested, dimensions are approximate and floor plans are not to scale



11338934/20250702/CW/NJ