



OVER 60?

Secure this property
for up to **59% less!**

Price

£600,000

Freehold

4x  2x  2x 

Eastcourt Lane, Gillingham, Kent, ME8

Wards
Helping you move forwards

Accommodation

SPLIT LEVEL GROUND FLOOR

Porch

Entrance Hall

Lounge: 12'7 x 12'4 (3.84m x 3.76m)

Family Room : 14'6 x 11'5 (4.42m x 3.48m)

Kitchen/Dining Area : 25'3 x 9'2 (7.70m x 2.80m)

Kitchen : 8'8 x 8'1 (2.64m x 2.47m)

Utility Room : 8'8 x 4'9 (2.64m x 1.45m)

Downstairs Cloakroom

SPLIT LEVEL FIRST FLOOR

Landing

Bedroom 1 : 16'1 x 10'7 (4.91m x 3.23m)

En-Suite Shower Room

Bedroom 2: 13'7 x 10'4 (4.14m x 3.15m)

Bedroom 3: 12'9 x 9'7 (3.89m x 2.92m)

Bedroom 4: 11'4 x 9'4 (3.46m x 2.85m)

Bathroom

OUTSIDE

Front Garden

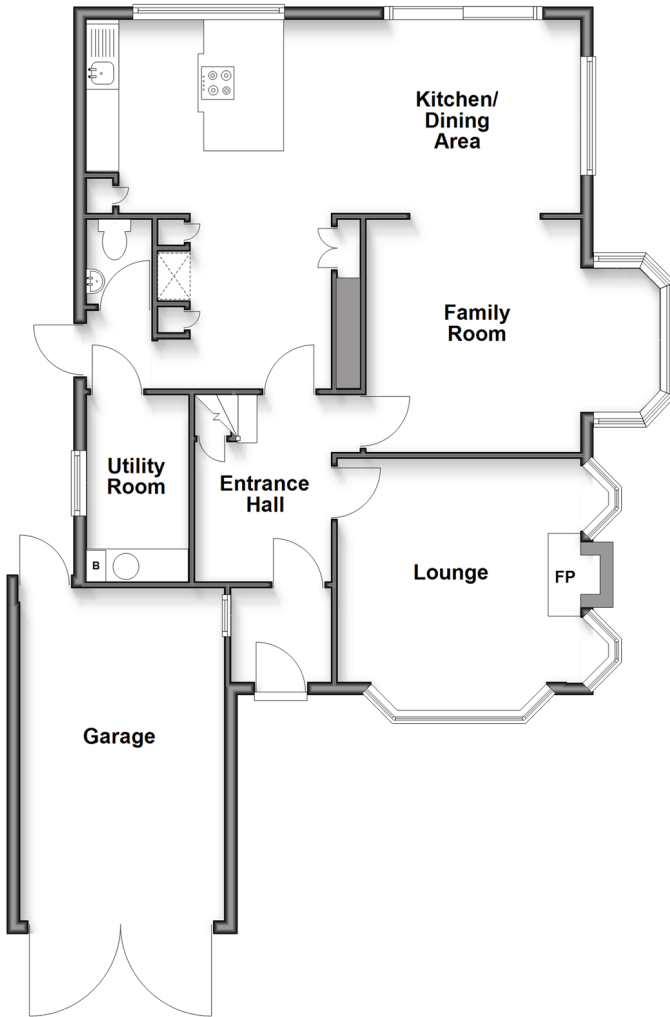
Rear Garden

Garage : 16'5 x 9'5 (5.01m x 2.87m)

Driveway

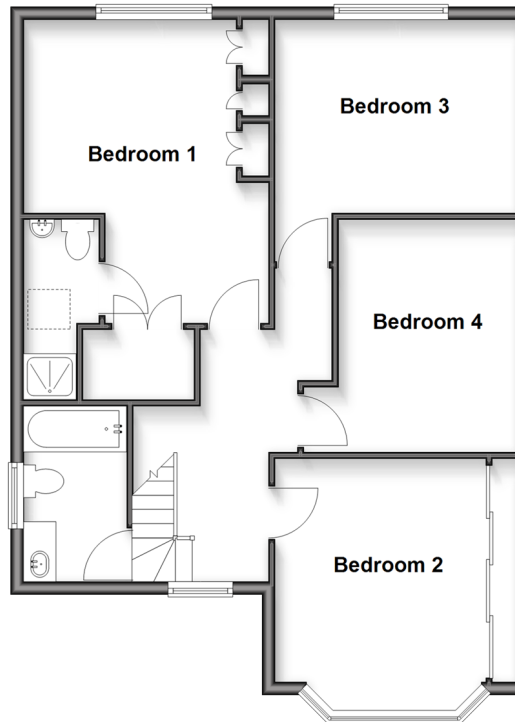
Split Level Ground Floor

Approx. 93.3 sq. metres (1003.9 sq. feet)



Split Level First Floor

Approx. 71.6 sq. metres (771.2 sq. feet)





Main features

- A stunning extended character property that would be a perfect family home
- Beautiful 25ft open plan kitchen/dining area
- Cosy lounge and separate family room
- Useful downstairs cloakroom
- Character features throughout
- Generous private rear garden
- Close to plenty of local amenities



Nearest Schools

Primary Schools: St Thomas of Canterbury RC Primary, Twydall Junior School, Featherby Junior School
Secondary Schools: Rainham Mark Grammar School, The Robert Napier School, Rainham School for Girls, The Howard School



Transport Information

Train Stations: Rainham 1.8 miles, Gillingham 3.0 miles, Chatham 3.6 miles



Address

Eastcourt Lane, Gillingham, Kent, ME8



Directions

For directions to this property please contact us.



Call Rainham Branch 01634 373531 ■ wardsofkent.co.uk



■ If buying to let, the energy rating will need to be improved to at least 'E' rating before you can let the property
■ Appliances & services are untested, dimensions are approximate and floor plans are not to scale

■ Legal advice should be taken to verify fixtures/fittings, planning, alterations and/or lease details
■ Through a Homewise Home For Life Plan people aged 60+ can secure this property for up to 59% less, by purchasing a Lifetime Lease.

11337305/20250623/CW/DW