



**Price**  
**£335,000**

**Freehold**

2x  1x  1x 

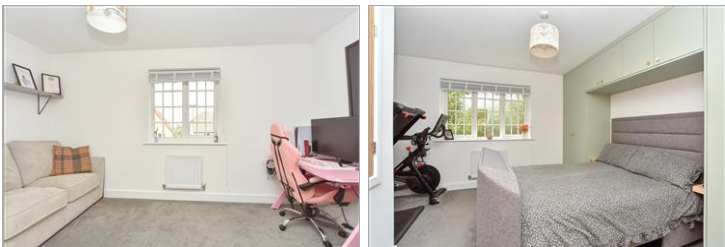
**Red Cherry Close,  
Rainham, Gillingham,  
Kent, ME8**

**OVER 60?**

Secure this property  
for up to **59% less!**

*Wards*  
Helping you move forwards





## Main features

- Beautifully presented first time home
- Spacious lounge and modern fitted kitchen/diner with a downstairs cloakroom
- Ample parking on the driveway
- Generous low maintenance garden
- Situated in a central location close to the local shops, train station and amenities

## Accommodation

### GROUND FLOOR

Entrance Hall

Downstairs Cloakroom

Kitchen/Diner: 15'11 x 6'11 (4.85m x 2.11m)

Lounge: 13'9 x 11'8 (4.19m x 3.56m)

### FIRST FLOOR

Landing

Bedroom 1 : 13'10 x 11'9 (4.22m x 3.58m)

Bedroom 2 : 13'10 x 9'2 (4.22m x 2.80m)

Bathroom

### OUTSIDE

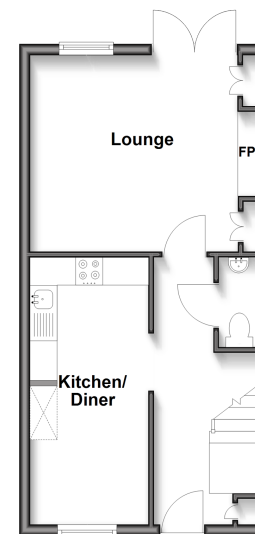
Front Garden

Rear Garden

Driveway

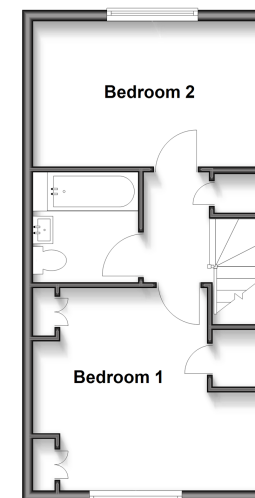
### Ground Floor

Approx. 36.0 sq. metres (387.4 sq. feet)



### First Floor

Approx. 36.0 sq. metres (387.4 sq. feet)



**Call Rainham - 01634 373531 ■ [wardsof Kent.co.uk](http://wardsof Kent.co.uk)**

- Legal advice should be taken to verify fixtures/fittings, planning, alterations and/or lease details
- Appliances & services are untested, dimensions are approximate and floor plans are not to scale
- Through a Homewise Home For Life Plan people aged 60+ can secure this property for up to 59% less, by purchasing a Lifetime Lease.



11338856/20250506/CW/NJ