



**OVER 60?**

Secure this property  
for up to **59% less!**

**Price**

**£350,000**

**Freehold**

2x  1x  1x 

**Cherry Orchard Drive,  
Rainham, Gillingham,  
Kent, ME8**

*Wards*  
Helping you move forwards



## Main features

- An attractive and smartly presented property that would be a perfect first home
- Spacious 19ft lounge and open plan kitchen/diner
- Useful downstairs cloakroom
- Low maintenance rear garden
- Popular new development
- Two allocated parking spaces

## Accommodation

### GROUND FLOOR

Entrance Hall

Downstairs Cloakroom

Lounge : 19'6 x 11'8 (5.95m x 3.56m)

Kitchen/Diner: 14'5 x 9'1 (4.40m x 2.77m)

### FIRST FLOOR

Landing

Bedroom 1 : 13'0 x 10'3 (3.97m x 3.13m)

En-Suite Shower Room

Bedroom 2 : 14'6 x 6'7 (4.42m x 2.01m)

Bathroom

### OUTSIDE

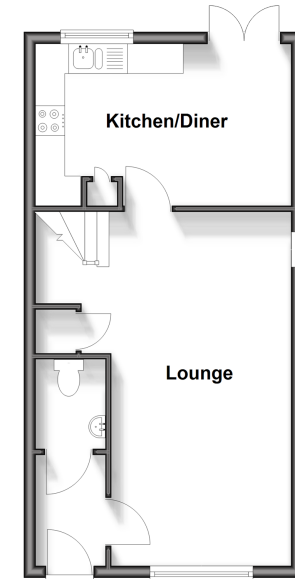
Front Garden

Rear Garden

2 Allocated Parking Spaces

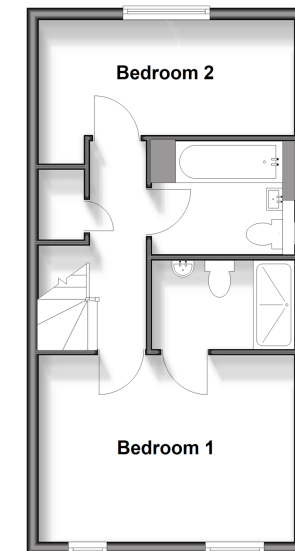
### Ground Floor

Approx. 38.3 sq. metres (412.2 sq. feet)



### First Floor

Approx. 38.3 sq. metres (412.2 sq. feet)



**Call Rainham - 01634 373531 ■ [wardsof Kent.co.uk](http://wardsof Kent.co.uk)**

- Legal advice should be taken to verify fixtures/fittings, planning, alterations and/or lease details
- Appliances & services are untested, dimensions are approximate and floor plans are not to scale
- Through a Homewise Home For Life Plan people aged 60+ can secure this property for up to 59% less, by purchasing a Lifetime Lease.



11338865/20250408/DW/DW