



Price
£750,000

Freehold

4x  2x  2x 

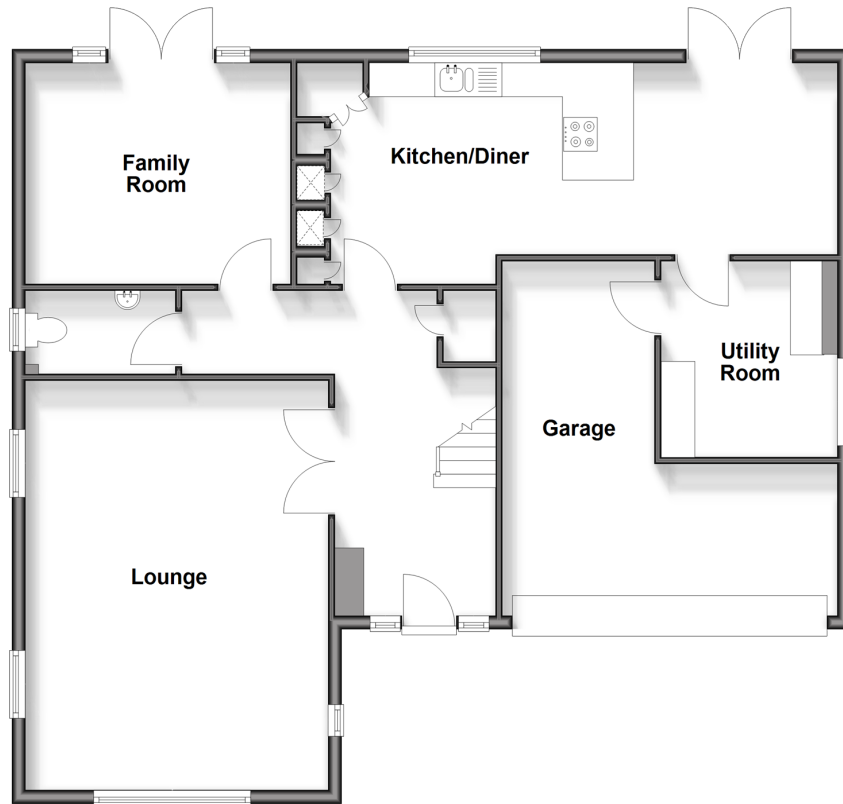
**Hempstead Road,
Hempstead, Gillingham,
Kent, ME7**

OVER 60?

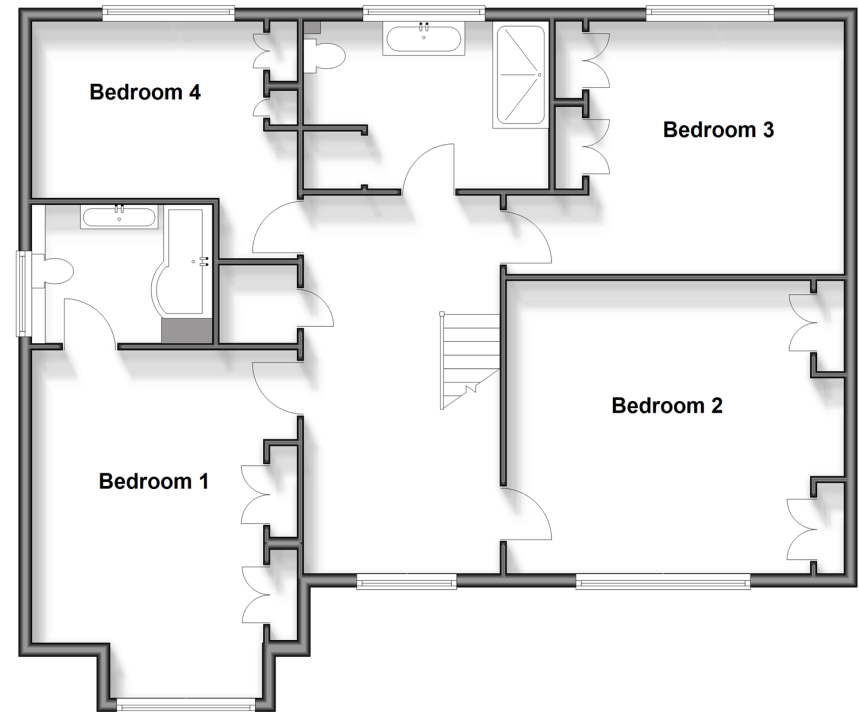
Secure this property
for up to **59% less!**

Wards
Helping you move forwards

Ground Floor
Approx. 110.0 sq. metres (1184.5 sq. feet)



First Floor
Approx. 104.3 sq. metres (1122.9 sq. feet)



Accommodation

GROUND FLOOR

Entrance Hall: 15'9 x 7'10 (4.80m x 2.39m)
Downstairs Cloakroom
Lounge : 19'8 x 14'9 (6.00m x 4.50m)
Family Room : 13'1 x 11'6 (3.99m x 3.51m)
Kitchen/Diner : 26'3 x 10'8 (8.01m x 3.25m)
Utility Room : 8'3 x 6'9 (2.52m x 2.06m)

FIRST FLOOR

Landing: 18'4 x 9'7 (5.59m x 2.92m)
Bedroom 1 : 16'9 x 12'11 (5.11m x 3.94m)
En-Suite Bathroom
Bedroom 2 : 15'11 x 14'1 (4.85m x 4.30m)
Bedroom 3 : 11'11 x 11'10 (3.63m x 3.61m)
Bedroom 4 : 12'11 x 7'11 (3.94m x 2.41m)
Shower Room : 12'0 x 8'1 (3.66m x 2.47m)

OUTSIDE

Front Garden
Rear Garden
In & Out Driveway
Garage : 16'0 x 14'4 (4.88m x 4.37m)



Main features

- A smartly presented property that would make a perfect long term family home
- Impressive 19ft lounge and beautiful 26ft kitchen/diner
- Useful utility room and downstairs cloakroom
- Generous rear garden
- Sought after Hempstead location
- Close to schools and shops



Nearest Schools

Primary Schools: Hempstead Junior School, Bredhurst C of E Voluntary Controlled Primary, Kingfisher Community
Secondary Schools: Leigh Academy Rainham, Rainham School for Girls, The Howard School, Rainham Mark Grammar School



Transport Information

Train Stations: Rainham 3.7 miles, Gillingham 3.8 miles, Chatham 4.2 miles



Address

Hempstead Road, Hempstead, Gillingham, Kent, ME7



Directions

For directions to this property please contact us.



Wards
Helping you move forwards

Call Rainham Branch 01634 373531 ■ wardsofkent.co.uk



- The seller is a person connected with Wards as defined in the Estate Agents Act 1979
- Appliances & services are untested, dimensions are approximate and floor plans are not to scale

- Legal advice should be taken to verify fixtures/fittings, planning, alterations and/or lease details
- Through a Homewise Home For Life Plan people aged 60+ can secure this property for up to 59% less, by purchasing a Lifetime Lease.



11338875/20250403/DW/DW