

**OVER 60?**

Secure this property  
for up to **59% less!**



**Price**

**£725,000**

**Freehold**

4x  2x  3x 

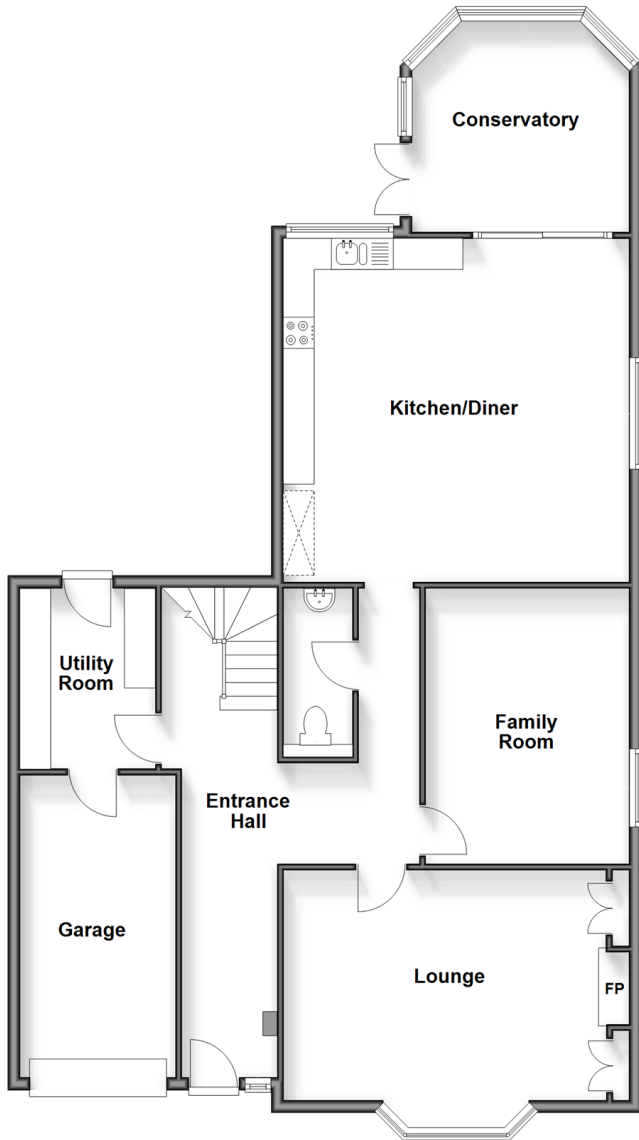
Durham Road, Wigmore, Gillingham, Kent,  
ME8

*Wards*  
Helping you move forwards



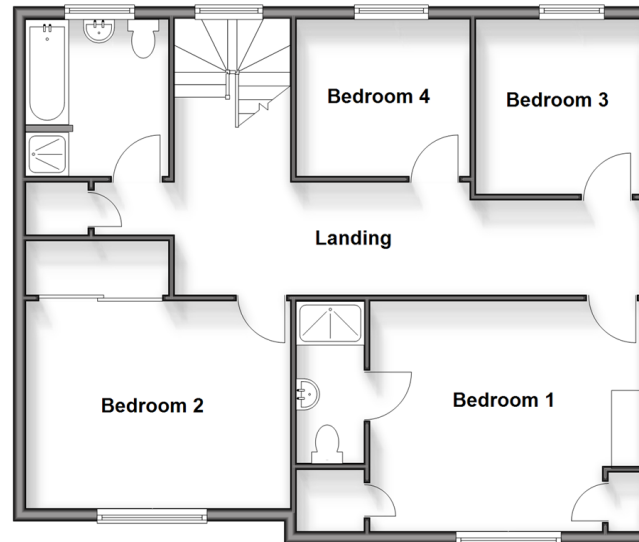
## Ground Floor

Approx. 122.7 sq. metres (1320.3 sq. feet)



## First Floor

Approx. 80.3 sq. metres (863.8 sq. feet)



## Accommodation

### GROUND FLOOR

Entrance Hall: 23'0 x 12'5 at widest point (7.02m x 3.79m)

Downstairs Cloakroom

Utility Room : 9'5 x 7'2 (2.87m x 2.19m)

Lounge : 17'1 x 14'8 (5.21m x 4.47m)

Family Room : 14'8 x 11'4 (4.47m x 3.46m)

Kitchen/Diner: 18'5 x 18'5 (5.62m x 5.62m)

Conservatory : 11'6 x 11'1 (3.51m x 3.38m)

### FIRST FLOOR

Landing

Bedroom 1 : 13'6 x 12'0 (4.12m x 3.66m)

En-Suite Shower Room

Bedroom 2 : 13'5 x 10'8 (4.09m x 3.25m)

Bedroom 3 : 9'5 x 8'9 (2.87m x 2.67m)

Bedroom 4: 8'8 x 8'2 (2.64m x 2.49m)

Family Bathroom : 8'3 x 7'3 (2.52m x 2.21m)

### OUTSIDE

Rear Garden

Summer House : 19'5 x 11'4 (5.92m x 3.46m)

Garage : 16'1 x 8'2 (4.91m x 2.49m)

Driveway



## Main features

- An attractive and extended character property that would be a fantastic family home
- Spacious 17ft lounge and impressive open plan kitchen/diner
- Additional family room and conservatory
- Useful utility room
- Beautiful and generous rear garden
- Sought after Wigmore location
- Close to schools and shops



### Nearest Schools

Primary Schools: Fairview Community Primary, Park Wood Junior School, St Margaret's CofE Voluntary Controlled Junior School  
Secondary Schools: Rainham School for Girls, The Howard School, Leigh Academy Rainham, Rainham Mark Grammar



### Transport Information

Train Stations: Rainham 1.5 miles, Gillingham 3.7 miles, Rochester 3.8 miles



### Address

Durham Road, Wigmore, Gillingham, Kent, ME8



### Directions

For directions to this property please contact us.





Call Rainham Branch 01634 373531 ■ [wardsofkent.co.uk](http://wardsofkent.co.uk)



- Legal advice should be taken to verify fixtures/fittings, planning, alterations and/or lease details
- Appliances & services are untested, dimensions are approximate and floor plans are not to scale
- Through a Homewise Home For Life Plan people aged 60+ can secure this property for up to 59% less, by purchasing a Lifetime Lease.



11338869/20250325/CW/DW