



OVER 60?

Secure this property
for up to **59% less!**

Price

£335,000

Freehold

3x  1x  2x 

**Drakes Close, Upchurch,
Sittingbourne, Kent,
ME9**

Wards
Helping you move forwards



Main features

- Well presented home for first time buyers or a family
- Useful downstairs cloakroom
- Spacious living throughout
- Substantial parking on the driveway
- Private rear garden
- Positioned in a popular village location with local amenities close to hand

Accommodation

GROUND FLOOR

Porch

Downstairs Cloakroom

Lounge: 12'6 x 12'0 (3.81m x 3.66m)

Dining Area : 9'8 x 8'9 (2.95m x 2.67m)

Kitchen: 10'5 x 9'3 (3.18m x 2.82m)

FIRST FLOOR

Landing

Bedroom 1 : 12'9 x 10'8 (3.89m x 3.25m)

Bedroom 2 : 11'7 x 11'0 (3.53m x 3.36m)

Bedroom 3 : 11'9 x 5'9 (3.58m x 1.75m)

Wet Room

OUTSIDE

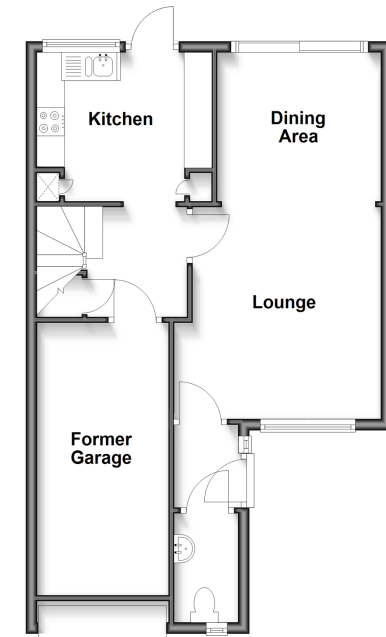
Front Garden

Rear Garden

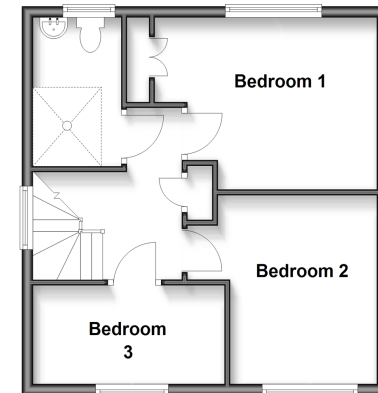
Former Garage: 15'9 x 7'4 (4.80m x 2.24m)

Driveway

Ground Floor
Approx. 53.5 sq. metres (575.8 sq. feet)



First Floor
Approx. 40.4 sq. metres (434.6 sq. feet)



Call Rainham - 01634 373531 ■ wardsofkent.co.uk

- Legal advice should be taken to verify fixtures/fittings, planning, alterations and/or lease details
- Appliances & services are untested, dimensions are approximate and floor plans are not to scale
- Through a Homewise Home For Life Plan people aged 60+ can secure this property for up to 59% less, by purchasing a Lifetime Lease.



11338781/20250304/NJ/NJ