

OVER 60?

Secure this property
for up to **59% less!**



Price

£415,000

Freehold

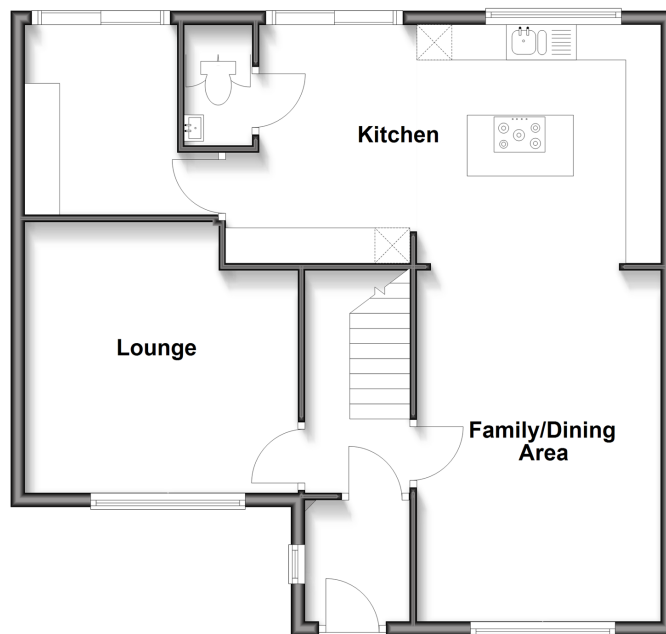
4x  2x  2x 

Nares Road, Parkwood, Gillingham, Kent,
ME8

Wards
Helping you move forwards

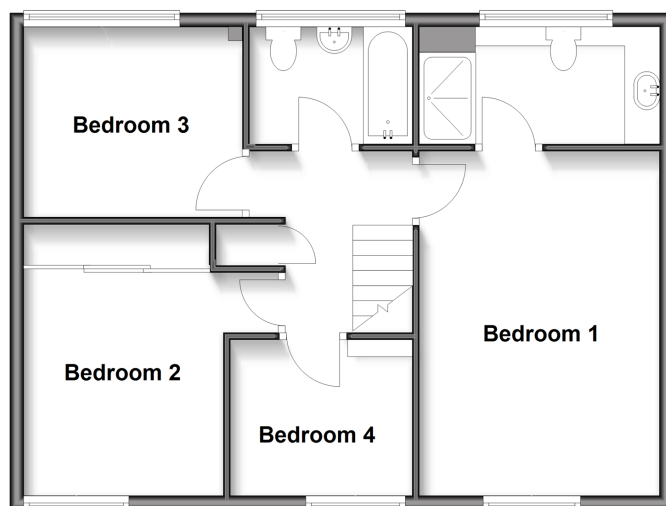
Ground Floor

Approx. 69.6 sq. metres (748.8 sq. feet)



First Floor

Approx. 58.0 sq. metres (623.9 sq. feet)



Accommodation

GROUND FLOOR

Porch

Entrance Hall

Lounge: 13'0 x 12'9 (3.97m x 3.89m)

Family/Dining Area : 16'3 x 11'6 (4.96m x 3.51m)

Kitchen: 21'5 x 11'2 (6.53m x 3.41m)

Study: 8'9 x 7'3 (2.67m x 2.21m)

Downstairs Cloakroom

FIRST FLOOR

Landing

Bedroom 1 : 16'4 x 11'6 (4.98m x 3.51m)

En-Suite Shower Room : 12'0 x 5'1 (3.66m x 1.55m)

Bedroom 2 : 10'7 x 9'5 (3.23m x 2.87m)

Bedroom 3 : 10'2 x 9'0 (3.10m x 2.75m)

Bedroom 4 : 8'4 x 7'1 (2.54m x 2.16m)

Bathroom

OUTSIDE

Front Garden

Rear Garden

Garage En-Bloc



Main features

- A beautifully presented and vastly extended end of terrace property
- Stunning 21ft kitchen and open plan family/dining area
- Study and downstairs cloakroom
- Impressive 16ft bedroom 1 with en-suite shower room
- Garage en-bloc
- Close to shops and schools



Nearest Schools

Primary Schools: St Augustine of Canterbury Catholic Primary, Deanwood Primary Education Technology School, Park Wood Junior
Secondary Schools: Rainham School for Girls, The Howard School, Leigh Academy Rainham



Transport Information

Train Stations: Rainham 1.6 miles, Newington 3.1 miles, Gillingham 3.5 miles



Address

Nares Road, Parkwood, Gillingham, Kent, ME8



Directions

For directions to this property please contact us.



Call Rainham Branch 01634 373531 ■ wardsofkent.co.uk



- If buying to let, the energy rating will need to be improved to at least 'E' rating before you can let the property
- Appliances & services are untested, dimensions are approximate and floor plans are not to scale

- Legal advice should be taken to verify fixtures/fittings, planning, alterations and/or lease details
- Through a Homewise Home For Life Plan people aged 60+ can secure this property for up to 59% less, by purchasing a Lifetime Lease.

11322788/20250218/CW/DW