



**Price**  
**£365,000**

**Freehold**

3x  1x  1x 

**Clavell Close, Parkwood,  
Gillingham, Kent, ME8**

**OVER 60?**

Secure this property  
for up to **59% less!**

*Wards*  
Helping you move forwards





## Main features

- Perfect family home
- Generous sized living throughout
- Spacious but yet low maintenance rear garden
- Substantial parking for multiple cars and a garage
- Situated in a central location close to the local shops and amenities

## Accommodation

### GROUND FLOOR

Entrance Hall

Kitchen: 9'9 x 8'3 (2.97m x 2.52m)

Lounge : 22'0 x 10'7 (6.71m x 3.23m)

Conservatory Area: 12'3 x 9'3 (3.74m x 2.82m)

### FIRST FLOOR

Landing

Bedroom 1 : 12'0 x 11'6 (3.66m x 3.51m)

Bedroom 2 : 11'4 x 9'9 (3.46m x 2.97m)

Bedroom 3 : 9'10 x 6'10 (3.00m x 2.08m)

Shower Room

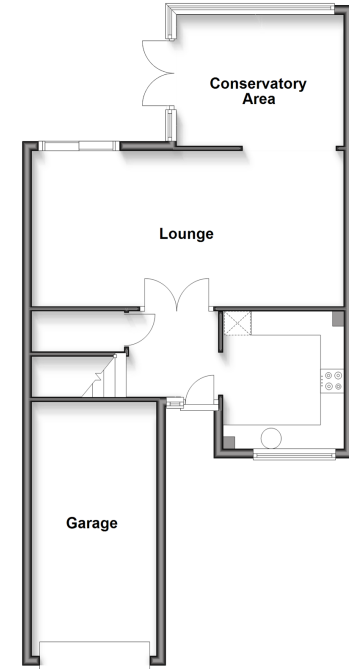
### OUTSIDE

Rear Garden

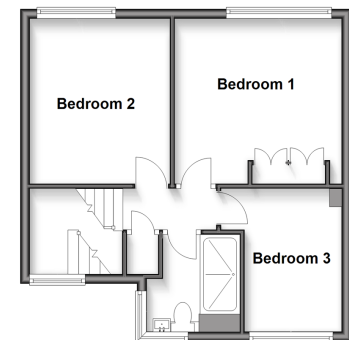
Garage

Driveway

**Ground Floor**  
Approx. 61.9 sq. metres (666.6 sq. feet)



**First Floor**  
Approx. 41.3 sq. metres (444.5 sq. feet)



**Call Rainham - 01634 373531 ■ [wardsof Kent.co.uk](http://wardsof Kent.co.uk)**

- Legal advice should be taken to verify fixtures/fittings, planning, alterations and/or lease details
- Appliances & services are untested, dimensions are approximate and floor plans are not to scale
- Through a Homewise Home For Life Plan people aged 60+ can secure this property for up to 59% less, by purchasing a Lifetime Lease.



11338787/20250218/CW/NJ