



Price
£315,000

Freehold

3x  1x  2x 

**Bendon Way, Rainham,
Gillingham, Kent, ME8**

OVER 60?

Secure this property
for up to **59% less!**

Wards
Helping you move forwards



Main features

- Perfect home for first time buyers or a family
- Useful garage and parking on the driveway
- Positioned on a spacious corner plot
- Bursting with opportunity and generous sized rooms throughout
- Situated in a central location close to the local schools and shops

Accommodation

GROUND FLOOR

- Porch
- Entrance Hall
- Lounge: 14'0 x 11'0 (4.27m x 3.36m)
- Dining Area : 9'2 x 8'6 (2.80m x 2.59m)
- Kitchen: 10'2 x 7'7 (3.10m x 2.31m)
- Lean To: 10'2 x 8'7 (3.10m x 2.62m)

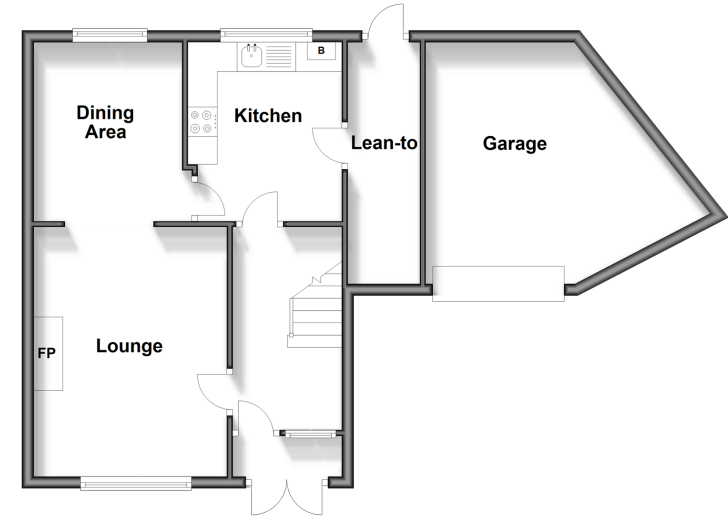
FIRST FLOOR

- Landing
- Bedroom 1 : 12'1 x 9'7 (3.69m x 2.92m)
- Bedroom 2 : 12'1 x 8'11 (3.69m x 2.72m)
- Bedroom 3 : 7'7 x 7'6 (2.31m x 2.29m)
- Bathroom

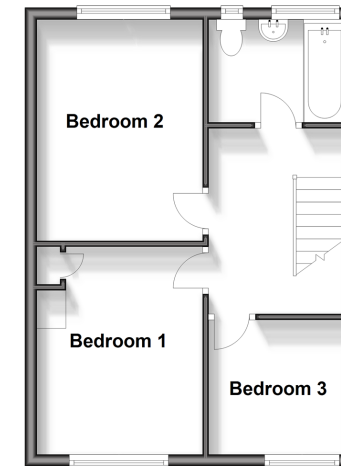
OUTSIDE

- Front Garden
- Rear Garden
- Garage
- Driveway

Ground Floor
Approx. 59.9 sq. metres (645.2 sq. feet)



First Floor
Approx. 38.8 sq. metres (418.1 sq. feet)



Call Rainham - 01634 373531 ■ wardsofkent.co.uk

- Legal advice should be taken to verify fixtures/fittings, planning, alterations and/or lease details
- Appliances & services are untested, dimensions are approximate and floor plans are not to scale
- Through a Homewise Home For Life Plan people aged 60+ can secure this property for up to 59% less, by purchasing a Lifetime Lease.



11338679/20250225/NJ/NJ