



Price
£280,000

Freehold

2x  1x  2x 

**Honey Close,
Hempstead, Gillingham,
Kent, ME7**

OVER 60?

Secure this property
for up to **59% less!**

Wards
Helping you move forwards



Main features

- Perfect property for first time buyers or downsizing
- Deceptively spacious and benefits from a light airy conservatory area with a modern feel
- Allocated parking space
- Low maintenance rear garden
- Close to the schools, shops and various amenities

Accommodation

GROUND FLOOR

Entrance Hall

Kitchen: 9'3 x 4'10 (2.82m x 1.47m)

Lounge/Dining Area: 15'0 x 11'7 (4.58m x 3.53m)

Conservatory Area: 9'9 x 9'7 (2.97m x 2.92m)

FIRST FLOOR

Landing

Bedroom 1 : 11'6 x 8'3 (3.51m x 2.52m)

Bedroom 2 : 8'4 x 7'5 (2.54m x 2.26m)

Bathroom

OUTSIDE

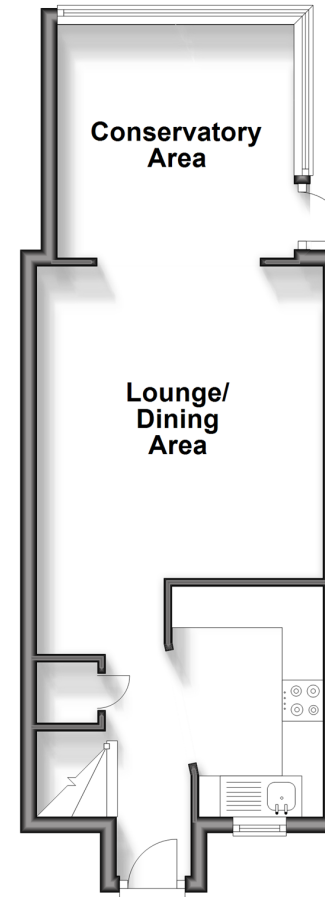
Front Garden

Rear Garden

Allocated Parking

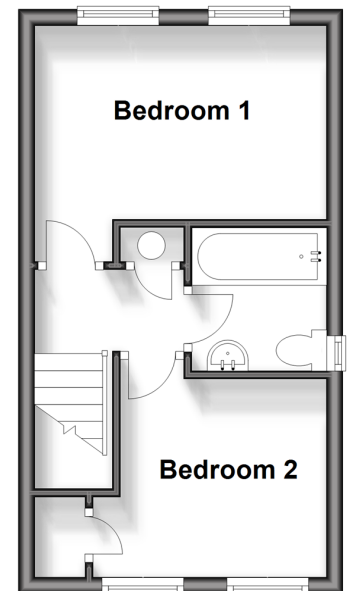
Ground Floor

Approx. 32.7 sq. metres (352.1 sq. feet)



First Floor

Approx. 24.0 sq. metres (258.7 sq. feet)



Call Rainham - 01634 373531 ■ wardsofkent.co.uk

- Legal advice should be taken to verify fixtures/fittings, planning, alterations and/or lease details
- Appliances & services are untested, dimensions are approximate and floor plans are not to scale
- Through a Homewise Home For Life Plan people aged 60+ can secure this property for up to 59% less, by purchasing a Lifetime Lease.



11338766/20250109/CW/NJ