



Price
£240,000

Freehold

2x  1x  1x 

**Ward View, Chatham,
Kent, ME5**

OVER 60?

Secure this property
for up to **59% less!**

Wards
Helping you move forwards



Main features

- Perfect first time buyers home
- Well presented and modern throughout with a handy downstairs cloakroom
- Being sold as chain free
- Allocated parking
- Situated in a quiet cul-de-sac location close to the town centre and motorway links

Accommodation

GROUND FLOOR

Entrance Hall

Downstairs Cloakroom

Kitchen: 9'1 x 6'0 (2.77m x 1.83m)

Lounge/Dining Area : 12'11 x 12'5 (3.94m x 3.79m)

FIRST FLOOR

Landing

Bedroom 1 : 9'6 x 8'11 (2.90m x 2.72m)

Bedroom 2 : 7'11 x 7'4 (2.41m x 2.24m)

Bathroom

OUTSIDE

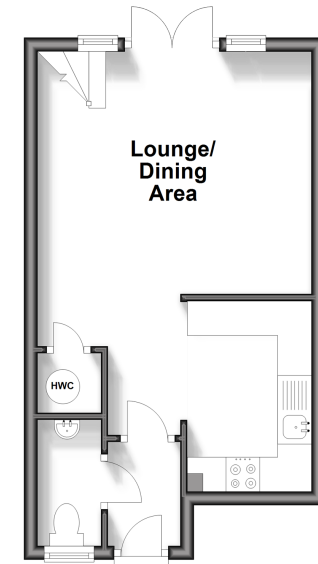
Front Garden

Rear Garden

Allocated Parking

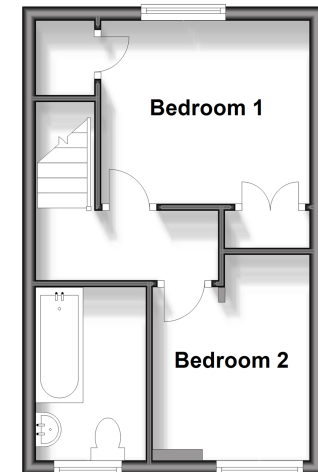
Ground Floor

Approx. 27.6 sq. metres (297.5 sq. feet)



First Floor

Approx. 26.0 sq. metres (279.4 sq. feet)



Call Rainham - 01634 373531 ■ wardsof Kent.co.uk

- Legal advice should be taken to verify fixtures/fittings, planning, alterations and/or lease details
- Appliances & services are untested, dimensions are approximate and floor plans are not to scale
- Through a Homewise Home For Life Plan people aged 60+ can secure this property for up to 59% less, by purchasing a Lifetime Lease.



11338757/20250515/NJ/NJ