



Price
£215,000

Freehold

1x  1x  1x 

**Ploughmans Way,
Rainham, Gillingham,
Kent, ME8**

OVER 60?

Secure this property
for up to **59% less!**

Wards
Helping you move forwards



Main features

- Perfect first time buyers starter home
- Benefits from a modern kitchen and bathroom and is well presented throughout
- Low maintenance rear garden
- Being sold as chain free
- Situated in a quiet cul-de-sac close to the shops and local amenities

Accommodation

GROUND FLOOR

Porch

Lounge/Diner: 17'4 x 13'6 (5.29m x 4.12m)

Kitchen: 7'7 x 5'10 (2.31m x 1.78m)

FIRST FLOOR

Landing

Bedroom : 13'8 x 9'1 (4.17m x 2.77m)

Bathroom

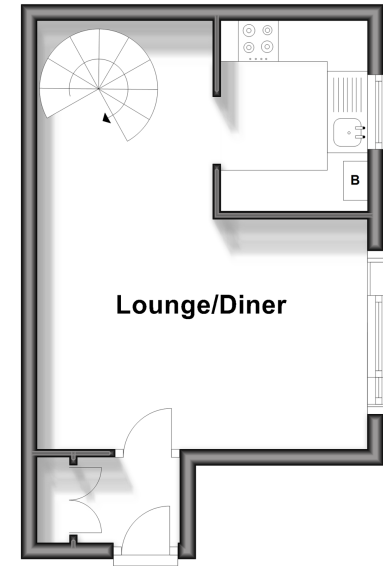
OUTSIDE

Rear Garden

Garage En-Bloc

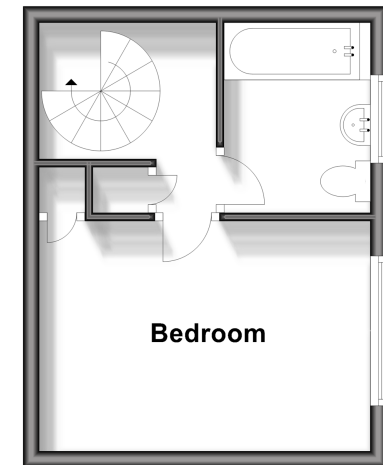
Ground Floor

Approx. 23.6 sq. metres (254.0 sq. feet)



First Floor

Approx. 21.6 sq. metres (232.2 sq. feet)



Call Rainham - 01634 373531 ■ wardsofkent.co.uk

- Legal advice should be taken to verify fixtures/fittings, planning, alterations and/or lease details
- Appliances & services are untested, dimensions are approximate and floor plans are not to scale
- Through a Homewise Home For Life Plan people aged 60+ can secure this property for up to 59% less, by purchasing a Lifetime Lease.



11338640/20241109/MK/NJ