



Price
£275,000

Freehold

3x  1x  1x 

**Wildman Close,
Parkwood, Gillingham,
Kent, ME8**

OVER 60?

Secure this property
for up to **59% less!**

Wards
Helping you move forwards



Main features

- Well presented family home ideal for first time buyers
- Generous sized conservatory
- Deceptively spacious inside and positioned in a quiet cul-de-sac location
- Low maintenance rear garden
- Situated in a central location close to the local amenities

Accommodation

GROUND FLOOR

Porch

Lounge: 15'5 x 15'3 (4.70m x 4.65m)

Kitchen: 15'3 x 8'8 (4.65m x 2.64m)

Conservatory : 14'2 x 9'2 (4.32m x 2.80m)

FIRST FLOOR

Landing

Bedroom 1 : 13'4 x 7'1 (4.07m x 2.16m)

Bedroom 2 : 11'1 x 10'2 (3.38m x 3.10m)

Bedroom 3 : 7'11 x 7'6 (2.41m x 2.29m)

Bathroom

OUTSIDE

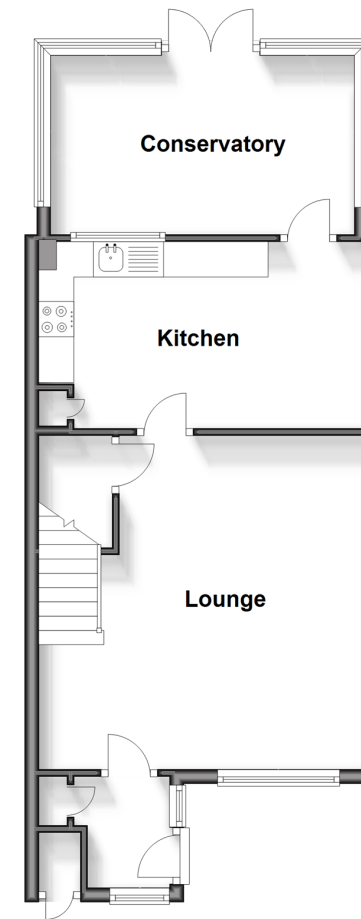
Front Garden

Rear Garden

Garage En-Bloc

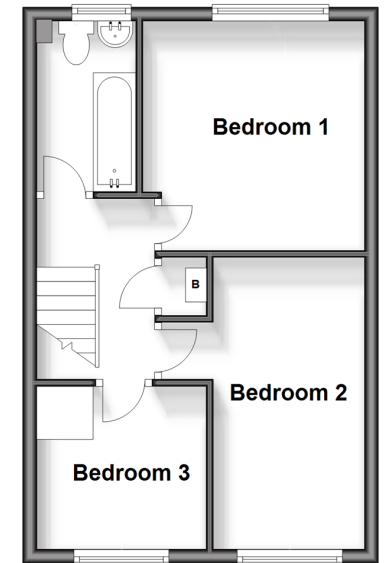
Ground Floor

Approx. 49.4 sq. metres (531.4 sq. feet)



First Floor

Approx. 34.9 sq. metres (375.2 sq. feet)



Call Rainham - 01634 373531 ■ wardsofkent.co.uk

- Legal advice should be taken to verify fixtures/fittings, planning, alterations and/or lease details
- Appliances & services are untested, dimensions are approximate and floor plans are not to scale
- Through a Homewise Home For Life Plan people aged 60+ can secure this property for up to 59% less, by purchasing a Lifetime Lease.



11332979/20241112/AJ/NJ