



OVER 60?

Secure this property
for up to **59% less!**

Price
£375,000

Freehold

3x  1x  2x 

**Norman Close,
Wigmore, Gillingham,
Kent, ME8**

Wards
Helping you move forwards



Main features

- Well presented family home
- Spacious and flexible accommodation
- Useful driveway and garage to the side of the property
- Low maintenance and private garden
- Sought after Wigmore location close to the local shops, schools and amenities

Accommodation

GROUND FLOOR

Porch

Lounge: 17'6 x 13'1 (5.34m x 3.99m)

Dining Room: 11'8 x 8'11 (3.56m x 2.72m)

Kitchen: 11'8 x 8'1 (3.56m x 2.47m)

FIRST FLOOR

Landing

Bedroom 1 : 13'7 x 9'2 (4.14m x 2.80m)

Bedroom 2 : 11'2 x 10'11 (3.41m x 3.33m)

Bedroom 3: 10'1 x 8'0 (3.08m x 2.44m)

Bathroom

OUTSIDE

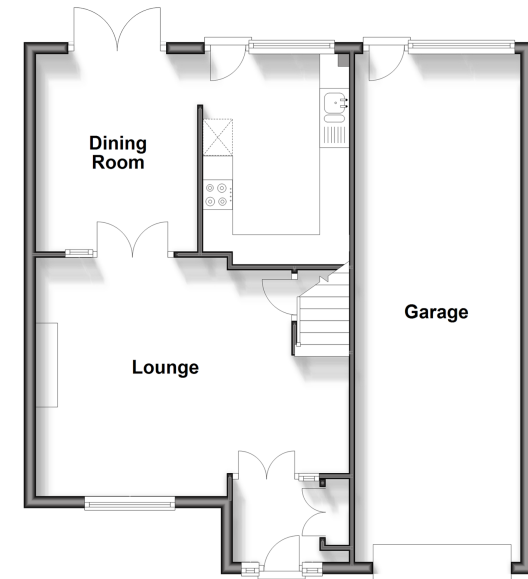
Front Garden

Rear Garden

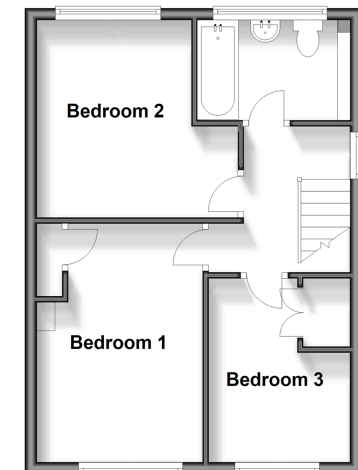
Garage: 29'0 x 9'3 (8.85m x 2.82m)

Driveway

Ground Floor
Approx. 67.5 sq. metres (726.6 sq. feet)



First Floor
Approx. 39.8 sq. metres (428.4 sq. feet)



Call Rainham - 01634 373531 ■ wardsofkent.co.uk

- Legal advice should be taken to verify fixtures/fittings, planning, alterations and/or lease details
- Appliances & services are untested, dimensions are approximate and floor plans are not to scale
- Through a Homewise Home For Life Plan people aged 60+ can secure this property for up to 59% less, by purchasing a Lifetime Lease.



11338665/20241007/CW/NJ