



Price
£425,000

Freehold

3x  1x  1x 

**Birch Grove,
Hempstead, Gillingham,
Kent, ME7**

OVER 60?

Secure this property
for up to **59% less!**

Wards
Helping you move forwards



Main features

- A spacious family home in a sought after location
- Generous 15ft lounge and smart modern kitchen
- Close to Hempstead Valley Shopping Centre and popular schools
- Large corner plot garden with insulated and air conditioned outbuilding
- Easy access to the motorway links

Accommodation

GROUND FLOOR

Porch
 Entrance Hall
 Lounge: 15'7 x 11'10 (4.75m x 3.61m)
 Dining Area: 9'11 x 8'4 (3.02m x 2.54m)
 Kitchen: 11'1 x 10'1 (3.38m x 3.08m)

FIRST FLOOR

Landing
 Bedroom 1 : 11'9 x 11'0 (3.58m x 3.36m)
 Bedroom 2 : 12'0 x 10'8 (3.66m x 3.25m)
 Bedroom 3 : 8'2 x 6'11 (2.49m x 2.11m)
 Bathroom

OUTBUILDING

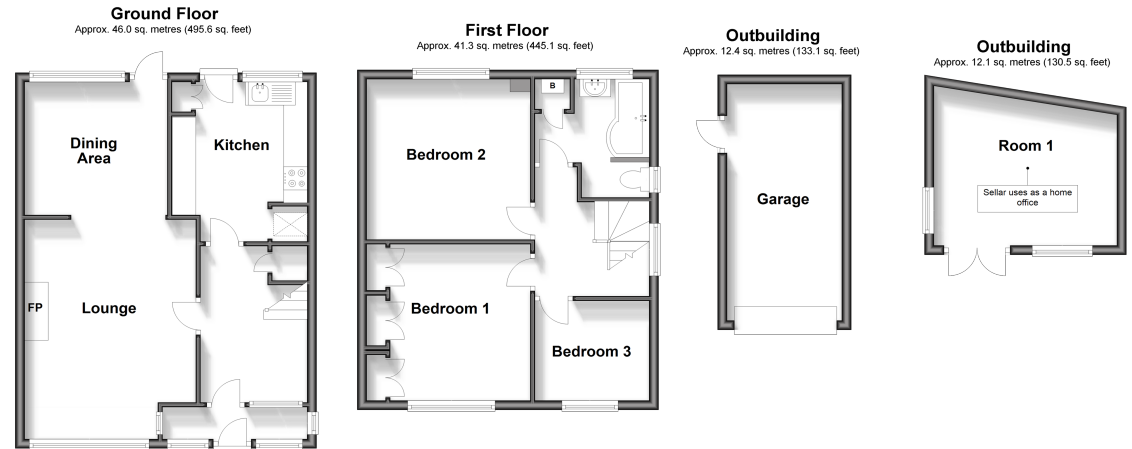
Garage: 16'5 x 8'2 (5.01m x 2.49m)

OUTBUILDING

Room 1: 12'4 x 10'4 (3.76m x 3.15m)

OUTSIDE

Front Garden
 Rear Garden
 Driveway



Call Rainham - 01634 373531 ■ wardsof Kent.co.uk

■ Legal advice should be taken to verify fixtures/fittings, planning, alterations and/or lease details
 ■ Through a Homewise Home For Life Plan people aged 60+ can secure this property for up to 59% less, by purchasing a Lifetime Lease.

■ Appliances & services are untested, dimensions are approximate and floor plans are not to scale



11021202/20240918/CW/KD