



**Price**  
**£325,000**

**Freehold**

3x  1x  2x 

**Teynham Green,  
Twydall, Gillingham,  
Kent, ME8**

**OVER 60?**

Secure this property  
for up to **59% less!**

*Wards*  
Helping you move forwards





## Main features

- Well presented family home
- Being sold as chain free
- Generous sized rear garden
- Offering spacious and flexile accommodation to suit your needs
- Useful downstairs cloakroom
- Situated in a central location close to the local amenities

## Accommodation

### GROUND FLOOR

- Porch
- Entrance Hall
- Downstairs Cloakroom
- Lounge: 16'5 x 12'2 (5.01m x 3.71m)
- Kitchen: 19'6 x 8'9 (5.95m x 2.67m)
- Conservatory: 10'5 x 9'10 (3.18m x 3.00m)
- Utility Room: 6'4 x 6'0 (1.93m x 1.83m)
- Study/Family Room: 11'5 x 6'1 (3.48m x 1.86m)

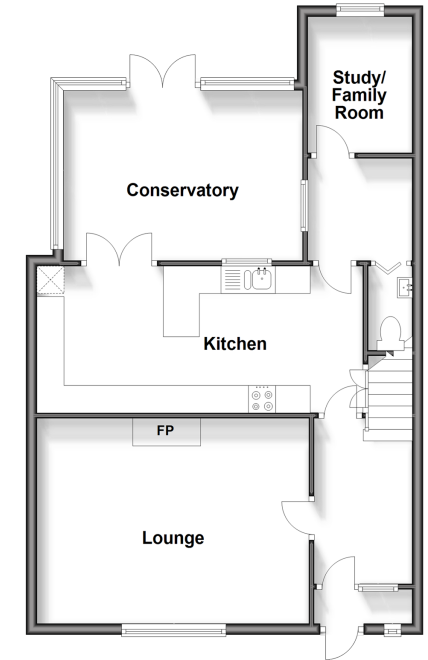
### FIRST FLOOR

- Landing
- Bedroom 1 : 14'5 x 10'9 (4.40m x 3.28m)
- Bedroom 2 : 10'9 x 10'5 (3.28m x 3.18m)
- Bedroom 3 : 11'0 x 9'10 (3.36m x 3.00m)
- Bathroom

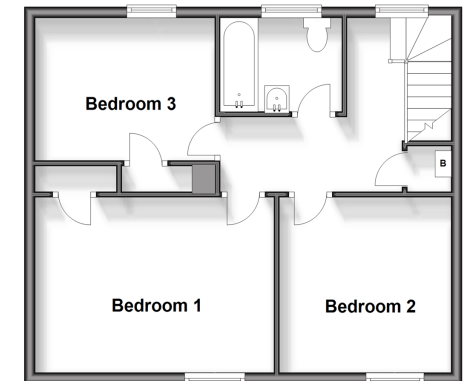
### OUTSIDE

- Front Garden
- Rear Garden

**Ground Floor**  
Approx. 68.1 sq. metres (733.0 sq. feet)



**First Floor**  
Approx. 49.6 sq. metres (534.4 sq. feet)



**Call Rainham - 01634 373531 ■ [wardsofkent.co.uk](http://wardsofkent.co.uk)**

- Legal advice should be taken to verify fixtures/fittings, planning, alterations and/or lease details
- Appliances & services are untested, dimensions are approximate and floor plans are not to scale
- Through a Homewise Home For Life Plan people aged 60+ can secure this property for up to 59% less, by purchasing a Lifetime Lease.



11338647/20241014/NJ/NJ