



Price
£325,000

Freehold

2x  1x  1x 

**Drakes Close, Upchurch,
Sittingbourne, Kent,
ME9**

OVER 60?

Secure this property
for up to **59% less!**

Wards
Helping you move forwards



Main features

- An immaculately presented property that offers excellent value for money
- Generous 15ft lounge and modern bathroom suite
- Open plan kitchen/breakfast room
- Low maintenance rear garden
- Useful outbuilding
- Popular village location

Accommodation

GROUND FLOOR

Porch
 Lounge: 14'3 x 11'7 (4.35m x 3.53m)
 Kitchen/Breakfast Room: 11'8 x 11'2 (3.56m x 3.41m)

FIRST FLOOR

Landing
 Bedroom 1 : 11'7 x 11'6 (3.53m x 3.51m)
 Bedroom 2 : 11'2 x 6'3 (3.41m x 1.91m)
 Bathroom

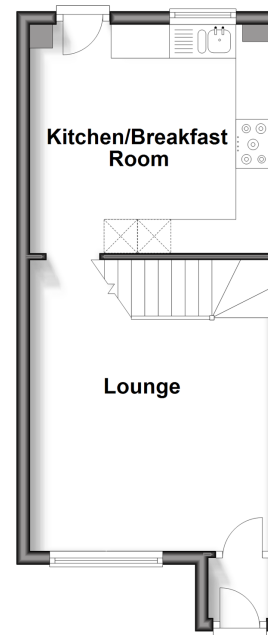
OUTBUILDING

Outbuilding : 11'6 x 8'1 (3.51m x 2.47m)

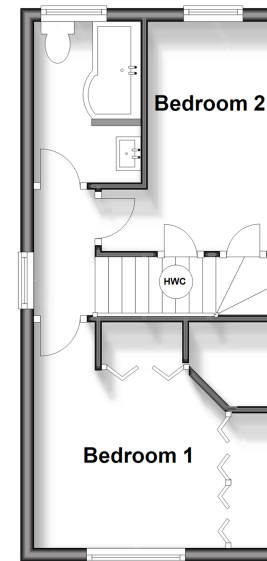
OUTSIDE

Rear Garden
 Side Garden
 Driveway

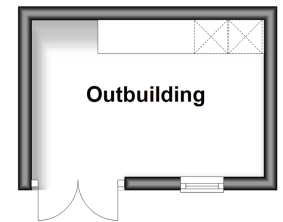
Ground Floor
 Approx. 29.1 sq. metres (313.0 sq. feet)



First Floor
 Approx. 28.2 sq. metres (303.3 sq. feet)



Outbuilding
 Approx. 8.2 sq. metres (87.8 sq. feet)



Call Rainham - 01634 373531 ■ wardsof Kent.co.uk

■ Legal advice should be taken to verify fixtures/fittings, planning, alterations and/or lease details
 ■ Through a Homewise Home For Life Plan people aged 60+ can secure this property for up to 59% less, by purchasing a Lifetime Lease.

■ Appliances & services are untested, dimensions are approximate and floor plans are not to scale



11338614/20241008/NJ/DW