



Price
£325,000

Freehold

3x  1x  1x 

**Goudhurst Road,
Gillingham, Kent, ME8**

OVER 60?

Secure this property
for up to **59% less!**

Wards
Helping you move forwards



Main features

- **Fabulously presented property perfect for a family or first time buyers**
- **Very generous sized rear garden**
- **Ample parking on the driveway**
- **Modern and spacious open plan kitchen and dining area**
- **Situated in a central location close to local schools and shops**

Accommodation

GROUND FLOOR

Entrance Hall

Lounge: 15'6 x 9'8 (4.73m x 2.95m)

Kitchen: 8'9 x 6'10 (2.67m x 2.08m)

Dining Area: 14'7 x 8'5 (4.45m x 2.57m)

FIRST FLOOR

Landing

Bedroom 1: 12'0 x 9'8 (3.66m x 2.95m)

Bedroom 2: 8'11 x 8'1 (2.72m x 2.47m)

Bedroom 3: 8'10 x 7'1 (2.69m x 2.16m)

Shower Room

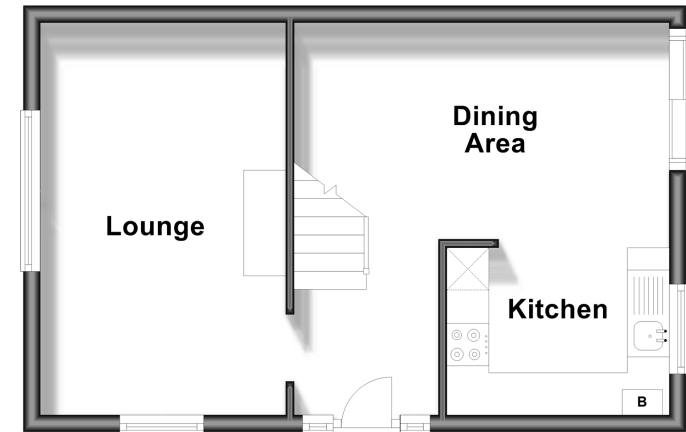
OUTSIDE

Driveway

Rear Garden

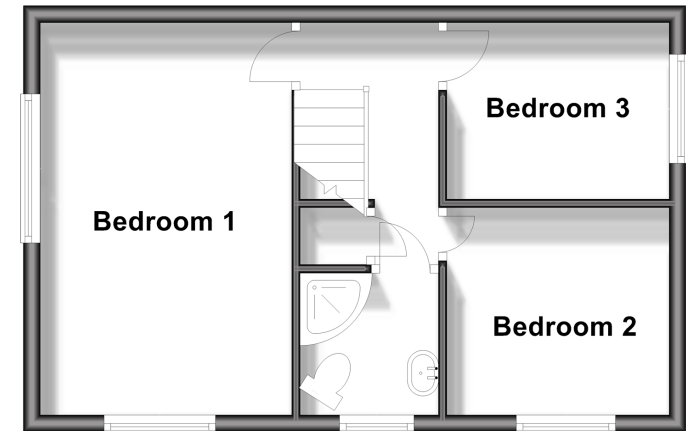
Ground Floor

Approx. 34.8 sq. metres (375.1 sq. feet)



First Floor

Approx. 35.2 sq. metres (378.6 sq. feet)



Call Rainham - 01634 373531 ■ wardsofkent.co.uk

- Legal advice should be taken to verify fixtures/fittings, planning, alterations and/or lease details
- Appliances & services are untested, dimensions are approximate and floor plans are not to scale
- Through a Homewise Home For Life Plan people aged 60+ can secure this property for up to 59% less, by purchasing a Lifetime Lease.



11338616/20240828/CW/NJ