



**Price**  
**£157,000**

**Leasehold**

1x  1x  1x 

**Wickham Close,  
Newington,  
Sittingbourne, Kent,  
ME9**

**OVER 60?**

Secure this property  
for up to **59% less!**

*Wards*  
Helping you move forwards



## Main features

- A smartly presented first floor maisonette that would be a perfect first purchase
- Open plan kitchen/living area and modern bathroom suite
- Useful communal garden to rear
- Allocated parking space
- Popular village location
- Close to shops and station

## Accommodation

### FIRST FLOOR

#### Hallway

Kitchen/Living Area : 16'7 x 13'5  
(5.06m x 4.09m)

Bedroom: 11'7 x 10'3 (3.53m x 3.13m)

#### Bathroom

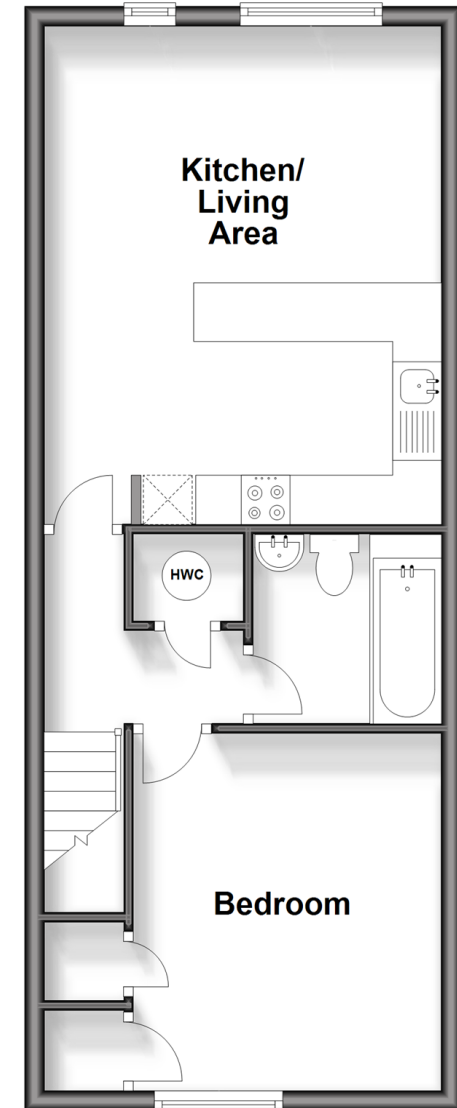
### OUTSIDE

Allocated Parking

Communal Garden to Rear

## First Floor

Approx. 44.0 sq. metres (473.5 sq. feet)



Call Rainham - 01634 373531 ■ [wardsofkent.co.uk](http://wardsofkent.co.uk)

- Legal advice should be taken to verify fixtures/fittings, planning, alterations and/or lease details
- Appliances & services are untested, dimensions are approximate and floor plans are not to scale
- Through a Homewise Home For Life Plan people aged 60+ can secure this property for up to 59% less, by purchasing a Lifetime Lease.



11338587/20240914/CW/DW