



**Price**  
**£525,000**

**Freehold**

4x  2x  2x 

**Evergreen Close,  
Hempstead, Gillingham,  
Kent, ME7**

**OVER 60?**

Secure this property  
for up to **59% less!**

*Wards*  
Helping you move forwards



## Main features

- An attractive property that would make a perfect long term family home
- Generous 18ft lounge with a feature open fire
- Spacious kitchen/breakfast room
- Useful downstairs cloakroom
- Sought after Hempstead location
- No forward chain!!

## Accommodation

### GROUND FLOOR

- Porch
- Entrance Hall
- Downstairs Cloakroom
- Dining Room : 13'2 x 8'8 (4.02m x 2.64m)
- Lounge: 18'1 x 11'6 (5.52m x 3.51m)
- Kitchen/Breakfast Room: 23'7 x 7'11 (7.19m x 2.41m)

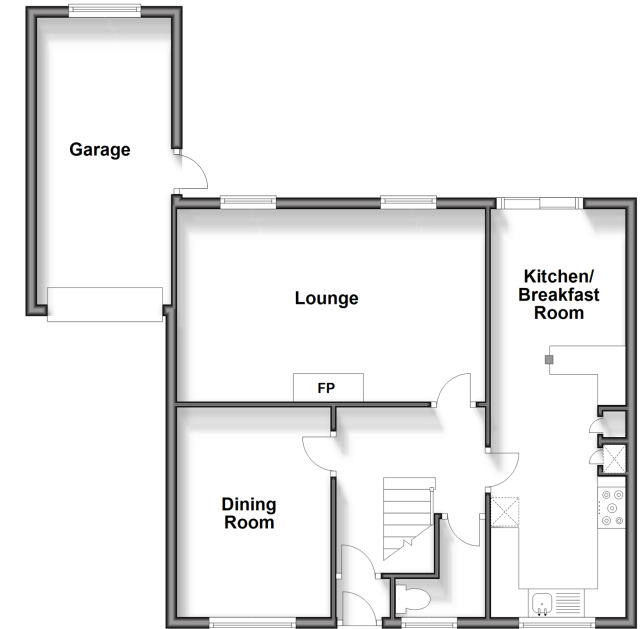
### FIRST FLOOR

- Landing
- Bedroom 1 : 13'5 x 11'9 (4.09m x 3.58m)
- En-Suite Bathroom
- Bedroom 2 : 12'0 x 8'9 (3.66m x 2.67m)
- Bedroom 3 : 11'4 x 8'4 (3.46m x 2.54m)
- Bedroom 4: 9'0 x 8'0 (2.75m x 2.44m)
- Bathroom

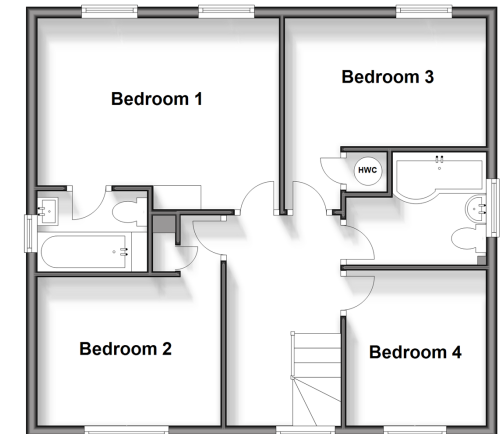
### OUTSIDE

- Front Garden
- Rear Garden
- Garage : 16'7 x 7'9 (5.06m x 2.36m)
- Driveway

**Ground Floor**  
Approx. 70.0 sq. metres (753.4 sq. feet)



**First Floor**  
Approx. 57.7 sq. metres (620.8 sq. feet)



**Call Rainham - 01634 373531 ■ [wardsofkent.co.uk](http://wardsofkent.co.uk)**

- Legal advice should be taken to verify fixtures/fittings, planning, alterations and/or lease details
- Appliances & services are untested, dimensions are approximate and floor plans are not to scale
- Through a Homewise Home For Life Plan people aged 60+ can secure this property for up to 59% less, by purchasing a Lifetime Lease.



11338460/20240717/CW/DW