



Price
£550,000

Freehold

4x  3x  2x 

**Arthur Road, Rainham,
Gillingham, Kent, ME8**

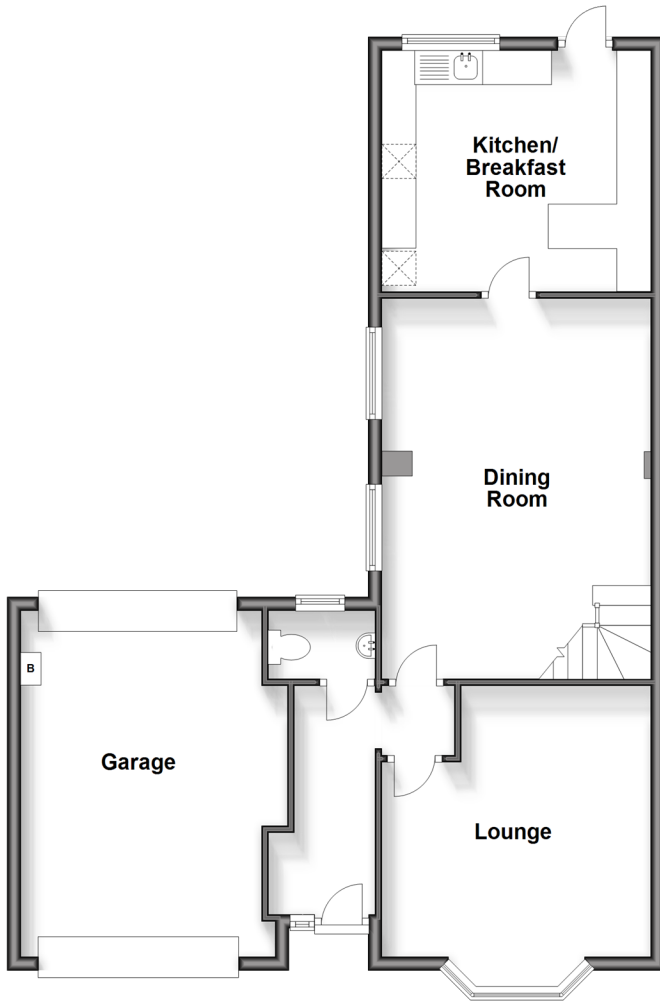
OVER 60?

Secure this property
for up to **59% less!**

Wards
Helping you move forwards

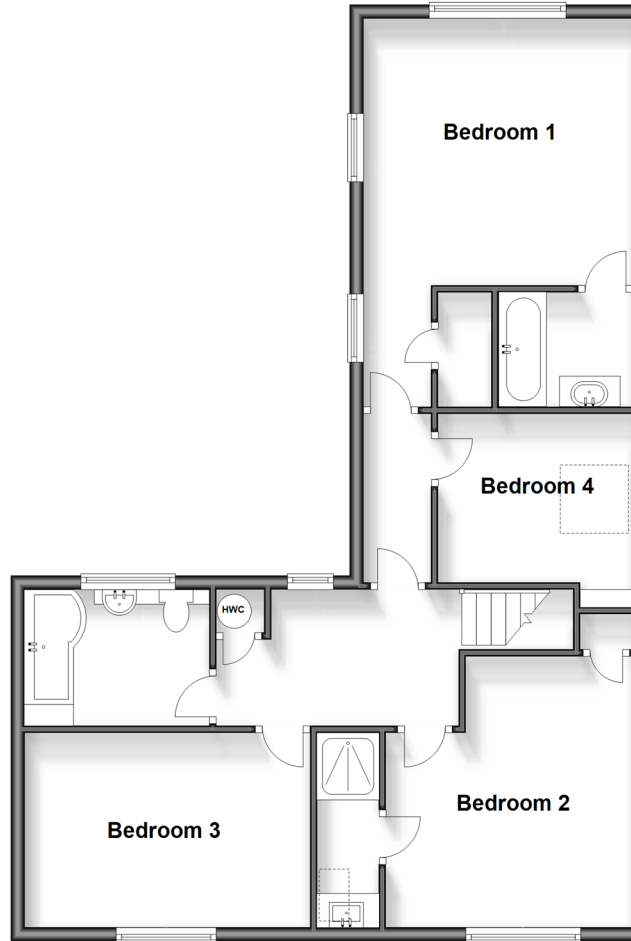
Ground Floor

Approx. 78.6 sq. metres (846.5 sq. feet)



First Floor

Approx. 77.2 sq. metres (831.4 sq. feet)



Accommodation

GROUND FLOOR

Entrance Hall

Downstairs Cloakroom

Lounge: 15'8 x 12'9 (4.78m x 3.89m)

Dining Room: 18'6 x 12'9 (5.64m x 3.89m)

Kitchen/Breakfast Room: 12'8 x 12'0 (3.86m x 3.66m)

FIRST FLOOR

Landing

Bedroom 1 : 13'0 x 12'6 (3.97m x 3.81m)

Walk-in-Wardrobe

En-Suite Bathroom

Bedroom 2 : 13'2 x 12'8 (4.02m x 3.86m)

En-Suite Shower Room

Bedroom 3 : 12'2 x 9'9 (3.71m x 2.97m)

Bedroom 4 : 9'7 x 7'7 (2.92m x 2.31m)

Bathroom

OUTSIDE

Front Garden

Rear Garden

Garage: 16'7 x 11'7 (5.06m x 3.53m)

Driveway



Main features

- This extended home offers plenty of space for a growing family
- Spacious 15ft lounge and lovely kitchen/breakfast room
- Useful downstairs cloakroom
- Impressive private rear garden
- Popular central location
- Close to schools and station



Nearest Schools

Primary Schools: St Margaret's CofE Voluntary Controlled Junior School, Miers Court Primary, Park Wood Junior School
Secondary Schools: Rainham School for Girls, The Howard School, Leigh Academy Rainham, Rainham Mark Grammar



Transport Information

Train Stations: Rainham 0.6 miles, Gillingham 2.8 miles, Newington 2.9 miles



Address

Arthur Road, Rainham, Gillingham, Kent, ME8



Directions

For directions to this property please contact us.



Wards
Helping you move forwards

Call Rainham Branch 01634 373531 ■ wardsofkent.co.uk



■ Legal advice should be taken to verify fixtures/fittings, planning, alterations and/or lease details ■ Appliances & services are untested, dimensions are approximate and floor plans are not to scale
■ Through a Homewise Home For Life Plan people aged 60+ can secure this property for up to 59% less, by purchasing a Lifetime Lease.

EPC RATING	CURRENT:	POTENTIAL:

11338533/20240911/DW/DW