



Price

£200,000

Leasehold

1x  1x  1x 

Whitbread Court,
Bramling Way, Rainham,
Gillingham, Kent, ME8

OVER 60?

Secure this property
for up to **59% less!**

Wards
Helping you move forwards



Main features

- This ground floor apartment is perfect for first time buyers
- Well presented throughout including a stylish modern fitted kitchen
- Benefits from allocated parking
- Being sold as chain free
- Situated in a central location close to the local shops and amenities

Accommodation

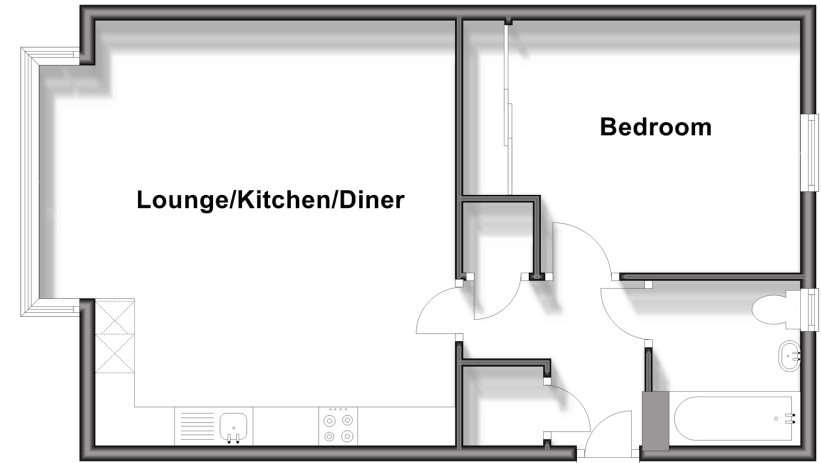
GROUND FLOOR

- Entrance Hall
- Lounge/Kitchen/Diner: 18'0 x 17'5 (5.49m x 5.31m)
- Bedroom : 12'2 x 10'8 (3.71m x 3.25m)
- Bathroom

OUTSIDE

- Allocated Parking
- Communal Garden

Ground Floor
Approx. 51.6 sq. metres (555.7 sq. feet)



Call Rainham - 01634 373531 ■ wardsofkent.co.uk

■ Legal advice should be taken to verify fixtures/fittings, planning, alterations and/or lease details
 ■ Through a Homewise Home For Life Plan people aged 60+ can secure this property for up to 59% less, by purchasing a Lifetime Lease.

■ Appliances & services are untested, dimensions are approximate and floor plans are not to scale



11338498/20240620/NJ/NJ