



Price
£280,000

Freehold

3x  1x  1x 

**Lime Court, Wigmore,
Gillingham, Kent, ME8**

OVER 60?

Secure this property
for up to **59% less!**

Wards
Helping you move forwards



Main features

- A spacious property that would be a perfect first home
- Generous 15ft lounge and open plan kitchen/diner
- Low maintenance rear garden
- Useful garage en-bloc
- Sought after Wigmore location
- No forward chain

Accommodation

GROUND FLOOR

Porch

Lounge : 15'9 x 9'6 (4.80m x 2.90m)

Kitchen/Diner: 15'9 x 11'6 (4.80m x 3.51m)

FIRST FLOOR

Landing

Bedroom 1 : 11'6 x 9'0 (3.51m x 2.75m)

Bedroom 2 : 8'7 x 8'5 (2.62m x 2.57m)

Bedroom 3 : 8'3 x 6'7 (2.52m x 2.01m)

Bathroom

OUTSIDE

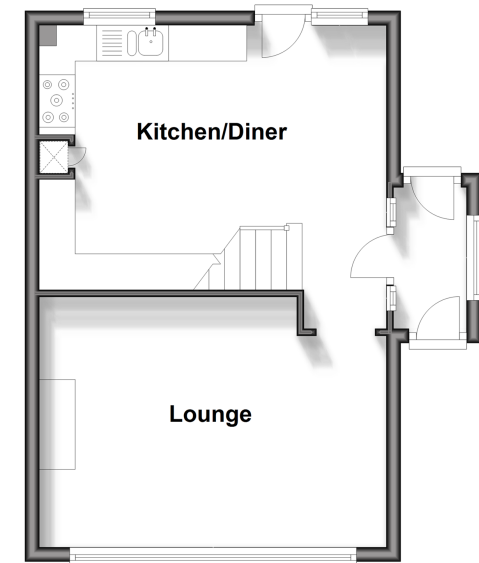
Front Garden

Rear Garden

Garage En-Bloc

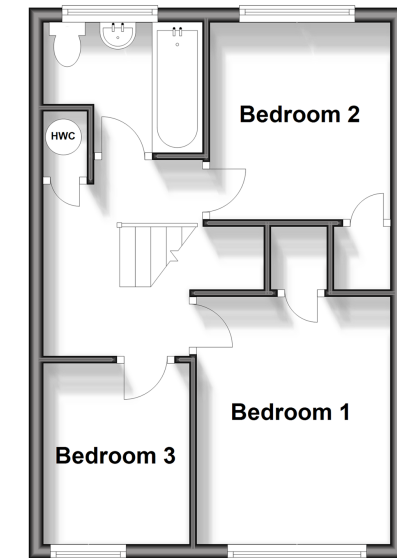
Ground Floor

Approx. 37.3 sq. metres (401.6 sq. feet)



First Floor

Approx. 35.1 sq. metres (378.0 sq. feet)



Call Rainham - 01634 373531 ■ wardsofkent.co.uk

- Legal advice should be taken to verify fixtures/fittings, planning, alterations and/or lease details
- Appliances & services are untested, dimensions are approximate and floor plans are not to scale
- Through a Homewise Home For Life Plan people aged 60+ can secure this property for up to 59% less, by purchasing a Lifetime Lease.



11338415/20240701/CW/DW