



Price
£200,000

Leasehold

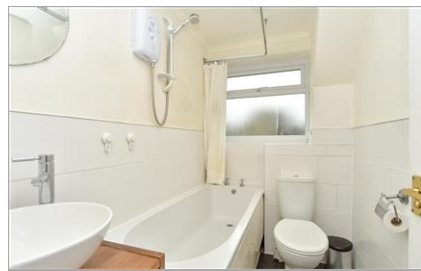
2x  1x  1x 

**Maplins Close, Rainham,
Gillingham, Kent, ME8**

OVER 60?

Secure this property
for up to **59% less!**

Wards
Helping you move forwards



Main features

- Perfect starter home for first time buyers
- Close to the town centre and Rainham train station
- Useful garage en-bloc
- Private and low maintenance garden to the rear
- Being sold with the benefit of no chain

Accommodation

FIRST FLOOR

Landing
 Kitchen: 10'11 x 7'2 (3.33m x 2.19m)
 Lounge: 14'4 x 10'9 (4.37m x 3.28m)

SECOND FLOOR

Landing
 Bedroom 1 : 11'1 x 10'7 (3.38m x 3.23m)
 Bedroom 2 : 10'7 x 9'2 (3.23m x 2.80m)
 Bathroom: 7'4 x 4'10 (2.24m x 1.47m)

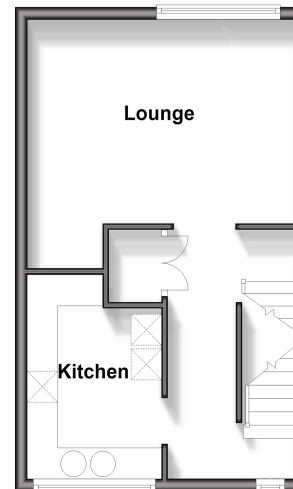
OUTBUILDING

Garage En-Bloc

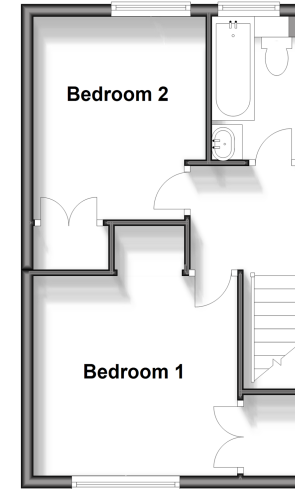
OUTSIDE

Front Garden
 Rear Garden

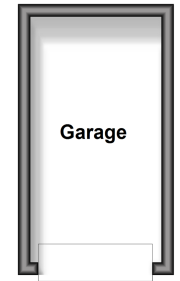
First Floor
 Approx. 32.7 sq. metres (352.3 sq. feet)



Second Floor
 Approx. 32.7 sq. metres (352.3 sq. feet)



Outbuilding
 Approx. 8.6 sq. metres (92.6 sq. feet)



Call Rainham - 01634 373531 ■ wardsofkent.co.uk

■ Legal advice should be taken to verify fixtures/fittings, planning, alterations and/or lease details
 ■ Through a Homewise Home For Life Plan people aged 60+ can secure this property for up to 59% less, by purchasing a Lifetime Lease.

■ Appliances & services are untested, dimensions are approximate and floor plans are not to scale



11327231/20240604/AJ/KD