

OVER 60?

Secure this property
for up to **59% less!**



Price

£600,000

Freehold

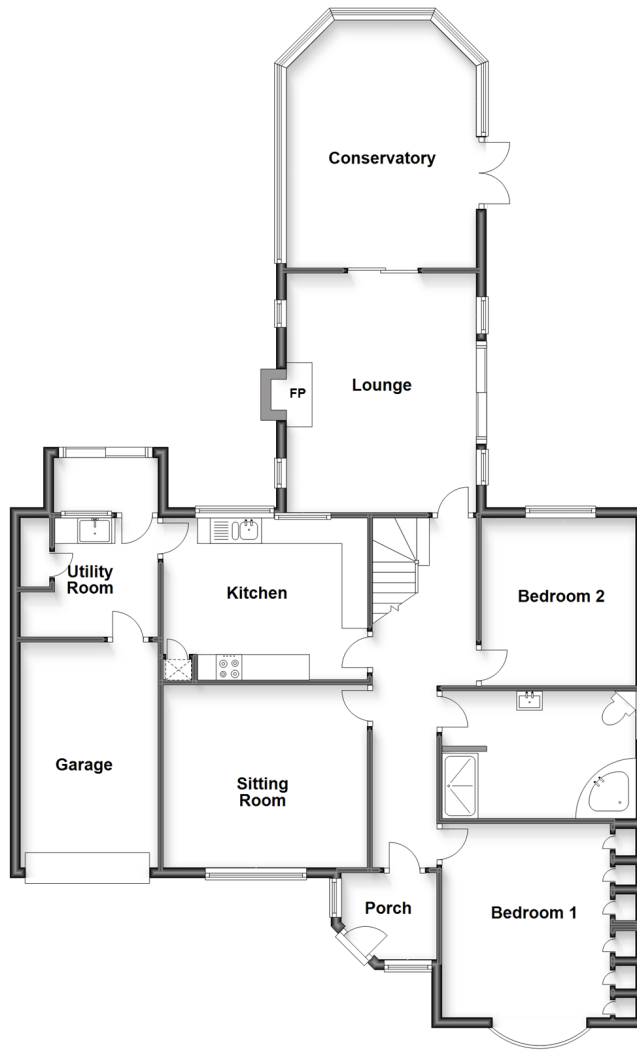
4x  2x  3x 

Dunn Street Road, Bredhurst, Gillingham,
Kent, ME7

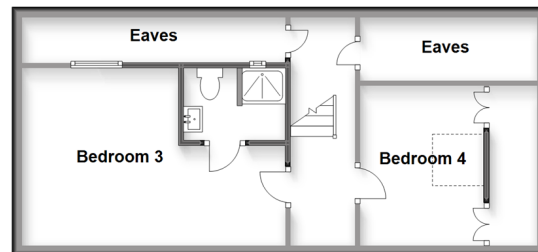
Wards

Helping you move forwards

Ground Floor
Approx. 133.8 sq. metres (1439.7 sq. feet)



First Floor
Approx. 44.5 sq. metres (479.2 sq. feet)



Accommodation

GROUND FLOOR

Porch

Entrance Hall

Bedroom 1 : 12'5 x 9'9 (3.79m x 2.97m)

Bedroom 2 : 11'9 x 9'9 (3.58m x 2.97m)

Bathroom: 9'3 x 7'1 (2.82m x 2.16m)

Sitting Room: 14'2 x 11'7 (4.32m x 3.53m)

Kitchen: 12'9 x 10'4 (3.89m x 3.15m)

Utility Room: 8'6 x 7'3 (2.59m x 2.21m)

Lounge: 15'7 x 11'8 (4.75m x 3.56m)

Conservatory: 17'4 x 11'5 (5.29m x 3.48m)

FIRST FLOOR

Landing

Bedroom 3: 16'9 x 11'3 (5.11m x 3.43m)

En-Suite Shower Room

Bedroom 4: 10'3 x 8'1 (3.13m x 2.47m)

OUTSIDE

Front Garden

Rear Garden

Garage: 16'1 x 9'2 (4.91m x 2.80m)

Driveway

Outbuilding: 24'0 x 7'9 (7.32m x 2.36m)



Main features

- A substantial property that offers vast amounts of space and flexible accommodation
- Impressive 15ft lounge and generous sized conservatory
- Useful utility room
- Private established rear garden
- Detached outbuilding
- Sought after village location
- A rare purchase opportunity

Nearest Schools

Primary Schools: Bredhurst C of E Voluntary Controlled Primary, Hempstead Junior School, Deanwood Primary Education Technology School
Secondary Schools: Rainham School for Girls, The Howard School, Greenacre School

Transport Information

Train Stations: Rainham 3.0 miles, Bearsted 3.7 miles, Gillingham 4.1 miles

Address

Dunn Street Road, Bredhurst, Gillingham, Kent, ME7

Directions

For directions to this property please contact us.



Wards
Helping you move forwards

Call Rainham Branch 01634 373531 ■ wardsofkent.co.uk



- If buying to let, the energy rating will need to be improved to at least 'E' rating before you can let the property
- Appliances & services are untested, dimensions are approximate and floor plans are not to scale

- Legal advice should be taken to verify fixtures/fittings, planning, alterations and/or lease details
- Through a Homewise Home For Life Plan people aged 60+ can secure this property for up to 59% less, by purchasing a Lifetime Lease.



11337907/20231011/CW/DW