



**OVER 60?**

Secure this property  
for up to **59% less!**

**Price**  
**£325,000**

**Freehold**

3x  1x  1x 

**Henry Street, Rainham,  
Gillingham, Kent, ME8**

*Wards*  
Helping you move forwards





## Main features

- A deceptive property that offers excellent value for money
- Generous 18ft kitchen/diner and spacious lounge
- Useful downstairs cloakroom
- Impressive sized rear garden
- Close to shops, schools and station
- A perfect family home

## Accommodation

### GROUND FLOOR

Porch  
Entrance Hall  
Lounge: 12'1 x 11'9 (3.69m x 3.58m)  
Kitchen/Diner: 18'0 x 11'0 (5.49m x 3.36m)  
Downstairs Cloakroom

### FIRST FLOOR

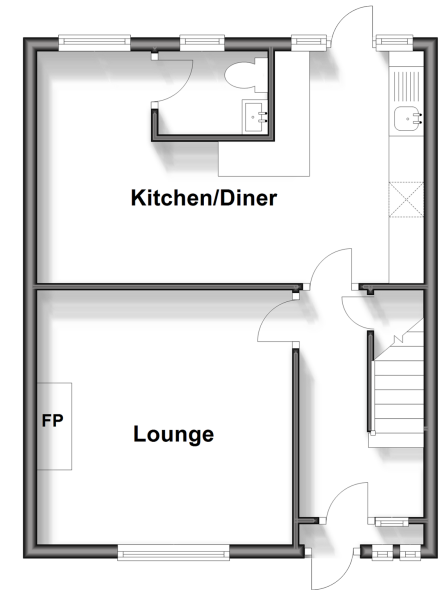
Landing  
Bedroom 1 : 11'9 x 11'6 (3.58m x 3.51m)  
Bedroom 2 : 14'5 x 11'0 (4.40m x 3.36m)  
Bedroom 3 : 10'0 x 9'0 (3.05m x 2.75m)  
Bathroom

### OUTSIDE

Rear Garden  
Driveway

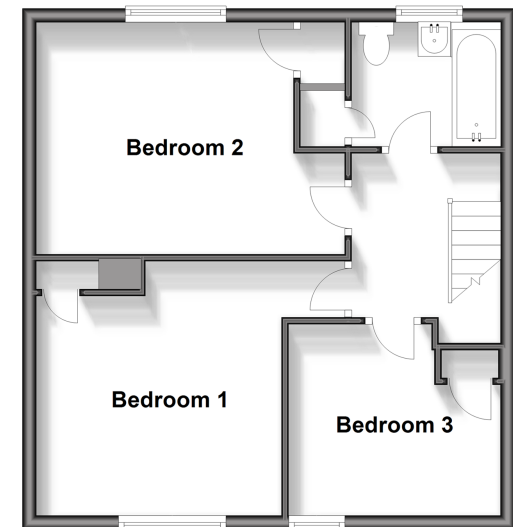
### Ground Floor

Approx. 39.4 sq. metres (424.4 sq. feet)



### First Floor

Approx. 47.4 sq. metres (509.8 sq. feet)



**Call Rainham - 01634 373531 ■ [wardsofkent.co.uk](http://wardsofkent.co.uk)**

- Legal advice should be taken to verify fixtures/fittings, planning, alterations and/or lease details
- Appliances & services are untested, dimensions are approximate and floor plans are not to scale
- Through a Homewise Home For Life Plan people aged 60+ can secure this property for up to 59% less, by purchasing a Lifetime Lease.



11337048/20240213/NJ/DW