



Price
£375,000

Freehold

2x  1x  2x 

**Rowland Avenue,
Gillingham, Kent, ME7**

OVER 60?

Secure this property
for up to **59% less!**

Wards
Helping you move forwards



Main features

- An attractive and spacious property that would be perfect for downsizing
- Open plan lounge and adjoining dining room
- Private rear garden
- In need of updating
- Sought after Darland location
- Close to the local shops and amenities
- No forward chain

Accommodation

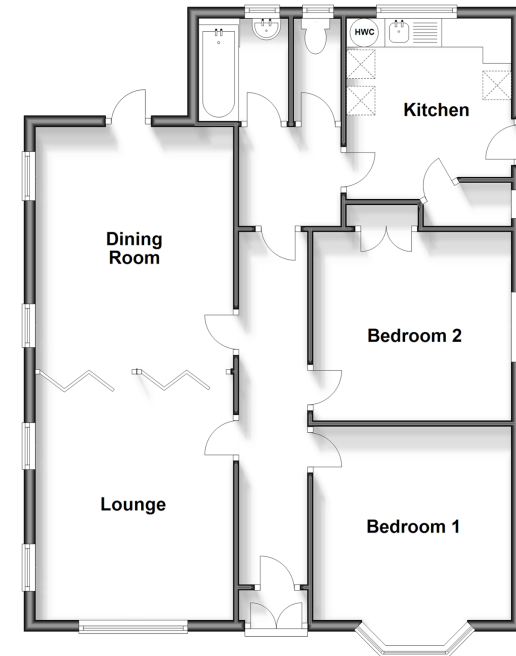
GROUND FLOOR

- Porch
- Entrance Hall
- Bedroom 1 : 12'7 x 11'4 (3.84m x 3.46m)
- Bedroom 2 : 11'4 x 11'0 (3.46m x 3.36m)
- Bathroom
- Separate Toilet
- Kitchen: 10'4 x 9'4 (3.15m x 2.85m)
- Lounge: 13'8 x 11'4 (4.17m x 3.46m)
- Dining Room: 13'9 x 11'5 (4.19m x 3.48m)

OUTSIDE

- Front Garden
- Rear Garden
- Garage
- Driveway

Ground Floor
Approx. 82.6 sq. metres (889.5 sq. feet)



Call Rainham - 01634 373531 ■ wardsofkent.co.uk

- If buying to let, the energy rating will need to be improved to at least 'E' rating before you can let the property
- Appliances & services are untested, dimensions are approximate and floor plans are not to scale

- Legal advice should be taken to verify fixtures/fittings, planning, alterations and/or lease details
- Through a Homewise Home For Life Plan people aged 60+ can secure this property for up to 59% less, by purchasing a Lifetime Lease.



11338035/20240612/CW/DW