

**OVER 60?**

Secure this property  
for up to **59% less!**



**Price**

**£600,000**

**Freehold**

4x  2x  2x 

Almond Grove, Hempstead, Gillingham,  
Kent, ME7

*Wards*

Helping you move forwards



## Main features

- An impressive sized family home offering plenty of space and excellent value for money
- Generous sized lounge and separate dining area
- Useful utility room and cloakroom
- Sought after Hempstead location
- Close to shops and schools

## Accommodation

### GROUND FLOOR

- Entrance Hall
- Lounge : 15'8 x 15'4 (4.78m x 4.68m)
- Dining Area : 10'6 x 9'7 (3.20m x 2.92m)
- Conservatory : 11'3 x 8'6 (3.43m x 2.59m)
- Kitchen : 14'6 x 10'4 (4.42m x 3.15m)
- Utility Room : 6'2 x 5'0 (1.88m x 1.53m)
- Cloakroom

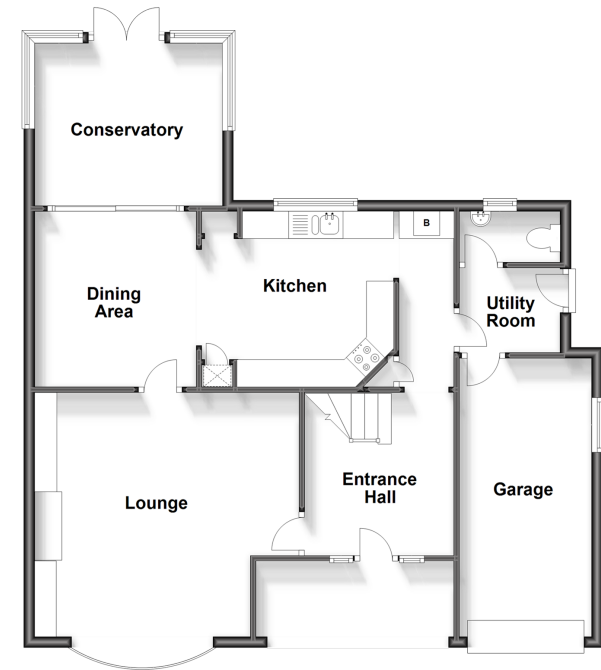
### FIRST FLOOR

- Landing
- Bedroom 1 : 10'9 x 10'5 (3.28m x 3.18m)
- Dressing Area
- En-suite Shower Room
- Bedroom 2 : 12'3 x 11'9 (3.74m x 3.58m)
- Bedroom 3 : 10'6 x 10'0 (3.20m x 3.05m)
- Bedroom 4 : 9'5 x 7'6 (2.87m x 2.29m)
- Bathroom: 10'5 x 9'6 (3.18m x 2.90m)

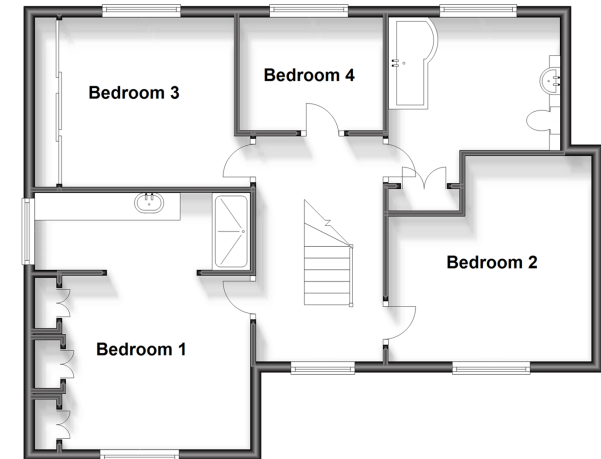
### OUTSIDE

- Front Garden
- Rear Garden
- Garage : 16'9 x 8'3 (5.11m x 2.52m)
- Driveway

**Ground Floor**  
Approx. 83.4 sq. metres (897.6 sq. feet)



**First Floor**  
Approx. 69.4 sq. metres (747.1 sq. feet)



**Call Rainham - 01634 373531 ■ [wardsofkent.co.uk](http://wardsofkent.co.uk)**

- Legal advice should be taken to verify fixtures/fittings, planning, alterations and/or lease details
- Appliances & services are untested, dimensions are approximate and floor plans are not to scale
- Through a Homewise Home For Life Plan people aged 60+ can secure this property for up to 59% less, by purchasing a Lifetime Lease.



11338219/20231106/CW/DW