

OVER 60?

Secure this property
for up to **59% less!**



Price

£525,000

Freehold

3x  2x  2x 

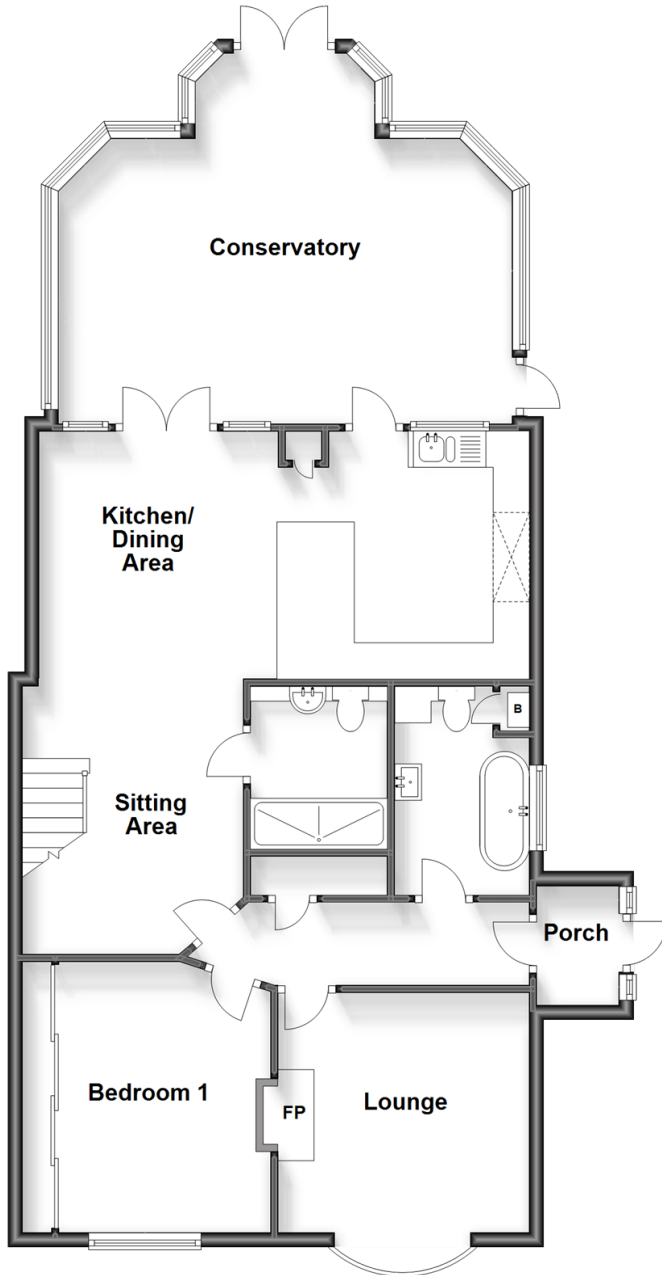
Bredhurst Road, Wigmore, Gillingham,
Kent, ME8

Wards

Helping you move forwards

Ground Floor

Approx. 105.9 sq. metres (1139.7 sq. feet)



Accommodation

GROUND FLOOR

Porch

Entrance Hall

Bathroom : 9'3 x 6'1 (2.82m x 1.86m)

Lounge: 13'2 x 11'4 (4.02m x 3.46m)

Bedroom 1: 12'4 x 9'3 (3.76m x 2.82m)

Kitchen/Dining Area : 22'3 x 11'1 (6.79m x 3.38m)

Sitting Area : 12'1 x 10'1 (3.69m x 3.08m)

Shower Room

Conservatory : 22'5 x 12'2 (6.84m x 3.71m)

FIRST FLOOR

Landing

Bedroom 2: 16'7 x 8'5 (5.06m x 2.57m)

Bedroom 3: 10'8 x 8'6 (3.25m x 2.59m)

OUTSIDE

Front Garden

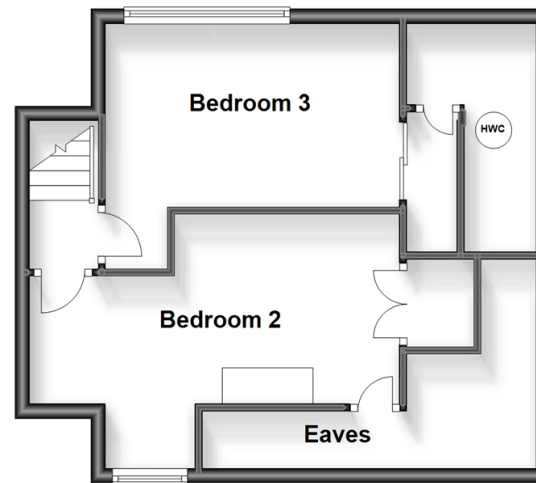
Rear Garden

Garage

Driveway

First Floor

Approx. 40.3 sq. metres (434.2 sq. feet)





Main features

- An attractive and deceptively spacious property that would make a great family home
- Flexible and adaptable accommodation to suit your needs
- Impressive 22ft panoramic conservatory
- Enormous private rear garden
- Sought after Wigmore location
- Close to shops and schools
- Unique purchase opportunity



Nearest Schools

Primary Schools: Fairview Community Primary, Park Wood Junior School, Bredhurst C of E Voluntary Controlled Primary
Secondary Schools: Rainham School for Girls, The Howard School, Leigh Academy Rainham, Rainham Mark Grammar



Transport Information

Train Stations: Rainham 1.8 miles, Gillingham 3.1 miles, Newington 3.6 miles



Address

Bredhurst Road, Wigmore, Gillingham, Kent, ME8



Directions

For directions to this property please contact us.



Wards
Helping you move forwards

Call Rainham Branch 01634 373531 ■ wardsofkent.co.uk



- Legal advice should be taken to verify fixtures/fittings, planning, alterations and/or lease details
- Appliances & services are untested, dimensions are approximate and floor plans are not to scale
- Through a Homewise Home For Life Plan people aged 60+ can secure this property for up to 59% less, by purchasing a Lifetime Lease.

EPC RATING

CURRENT: E(44) POTENTIAL: C(30)

11338166/20231016/CW/DW