

**OVER 60?**

Secure this property  
for up to **59% less!**



**Price**

**£550,000**

**Freehold**

4x  2x  3x 

Jackson Close, Rainham, Gillingham, Kent,

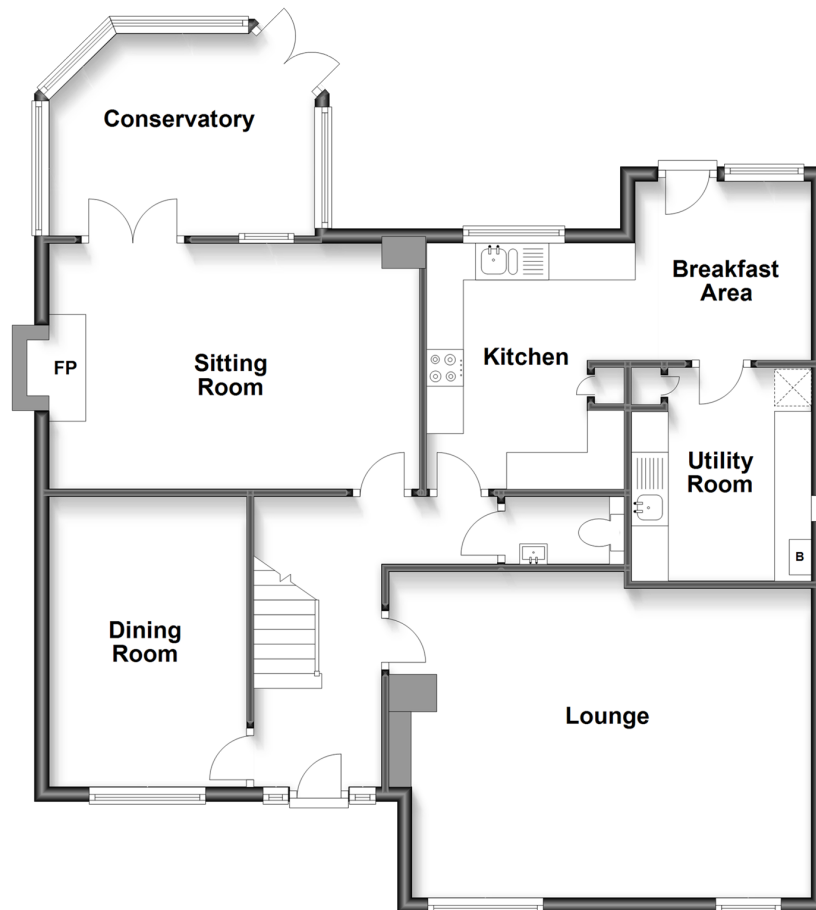
ME8

*Wards*

Helping you move forwards

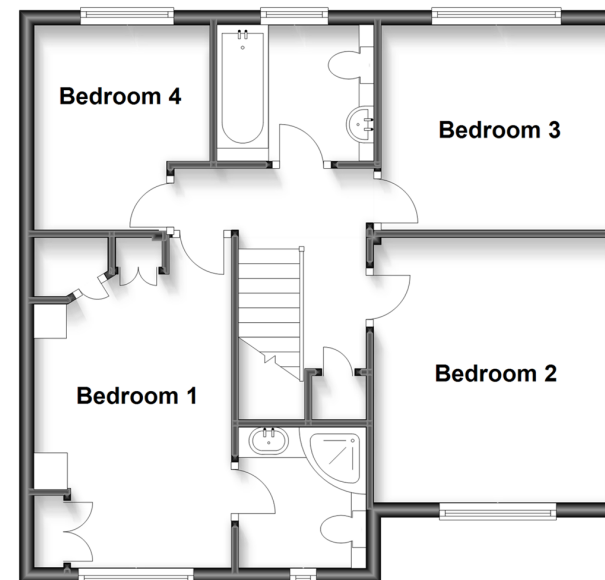
## Ground Floor

Approx. 96.3 sq. metres (1036.9 sq. feet)



## First Floor

Approx. 55.2 sq. metres (594.6 sq. feet)



## Accommodation

### GROUND FLOOR

Entrance Hall  
Downstairs Cloakroom  
Lounge : 17'5 x 15'1 (5.31m x 4.60m)  
Dining Room : 12'3 x 9'2 (3.74m x 2.80m)  
Sitting Room : 16'5 x 11'3 (5.01m x 3.43m)  
Conservatory : 11'9 x 8'5 (3.58m x 2.57m)  
Kitchen : 11'2 x 8'8 (3.41m x 2.64m)  
Breakfast Area : 7'8 x 7'5 (2.34m x 2.26m)  
Utility Room : 8'8 x 7'9 (2.64m x 2.36m)

### FIRST FLOOR

Landing  
Bedroom 1 : 14'8 x 9'2 (4.47m x 2.80m)  
En-Suite Shower Room  
Bedroom 2 : 12'0 x 10'0 (3.66m x 3.05m)  
Bedroom 3 : 9'6 x 9'0 (2.90m x 2.75m)  
Bedroom 4 : 9'0 x 8'0 (2.75m x 2.44m)  
Bathroom

### OUTSIDE

Front Garden  
Rear Garden  
Double Garage: 17'4 x 16'9 (5.29m x 5.11m)  
Driveway



## Main features

- An attractive and smartly presented extended family home
- Impressive 17ft lounge, separate sitting room and conservatory
- Open plan kitchen/breakfast area
- Useful utility room
- Low maintenance rear garden
- Sought after postcode location



### Nearest Schools

Primary Schools: Thames View Junior School, St Thomas of Canterbury RC Primary, Twydall Junior School  
Secondary Schools: Rainham School for Girls, The Howard School, Rainham Mark Grammar School



### Transport Information

Train Stations: Rainham 0.8 miles, Gillingham 2.2 miles, Chatham 3.2 miles



### Address

Jackson Close, Rainham, Gillingham, Kent, ME8



### Directions

For directions to this property please contact us.



**Wards**  
Helping you move forwards

Call Rainham Branch 01634 373531 ■ [wardsofkent.co.uk](http://wardsofkent.co.uk)



- The seller is a person connected with Wards as defined in the Estate Agents Act 1979
- Appliances & services are untested, dimensions are approximate and floor plans are not to scale

- Legal advice should be taken to verify fixtures/fittings, planning, alterations and/or lease details
- Through a Homewise Home For Life Plan people aged 60+ can secure this property for up to 59% less, by purchasing a Lifetime Lease.



11337854/20230920/CW/DW