



Price
£375,000

Freehold

3x  2x  2x 

**Ribston Gardens,
Paddock Wood,
Tonbridge, Kent, TN12**

OVER 60?

Secure this property
for up to **59% less!**

Wards
Helping you move forwards



Main features

- Located in the heart of Paddock Wood village in cul-de-sac position
- Driveway and garage
- A short distance from Paddock Wood mainline station with direct links to London
- Private garden to the rear
- A great home with the opportunity to add value!

Accommodation

GROUND FLOOR

Entrance Hall
 Lounge: 23'6 x 10'0 (7.17m x 3.05m)
 Utility Room: 14'9 x 10'2 (4.50m x 3.10m)
 Cloakroom
 Conservatory Area: 12'9 x 9'6 (3.89m x 2.90m)
 Kitchen: 11'2 x 8'1 (3.41m x 2.47m)

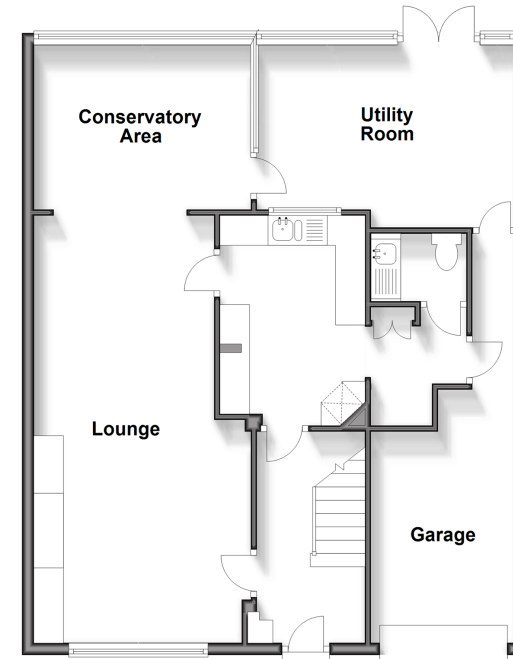
FIRST FLOOR

Landing
 Bedroom 1: 11'9 x 9'0 (3.58m x 2.75m)
 Bedroom 2: 11'6 x 11'4 (3.51m x 3.46m)
 Bedroom 3: 9'0 x 7'4 (2.75m x 2.24m)
 Shower Room

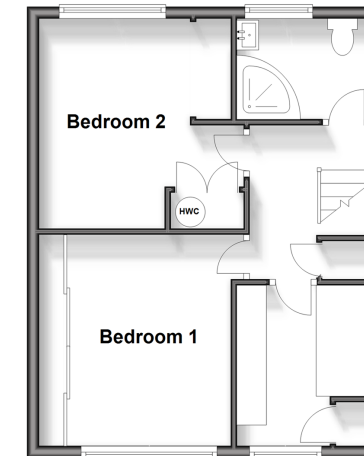
OUTSIDE

Garage
 Garden
 Off Road Parking

Ground Floor
 Approx. 81.5 sq. metres (877.6 sq. feet)



First Floor
 Approx. 40.0 sq. metres (430.6 sq. feet)



Call Paddock Wood - 01892 836877 ■ wardsof Kent.co.uk

- Legal advice should be taken to verify fixtures/fittings, planning, alterations and/or lease details
- Appliances & services are untested, dimensions are approximate and floor plans are not to scale
- Through a Homewise Home For Life Plan people aged 60+ can secure this property for up to 59% less, by purchasing a Lifetime Lease.



13623584/20240622/LF/GD