



Price
£230,000

Leasehold

2x  1x  1x 

**Hale Street, East
Peckham, Tonbridge,
Kent, TN12**

Wards
Helping you move forwards



Main features

- A spacious first floor maisonette on the rural fringes of popular village
- Private entrance, garage and parking space
- Large loft space
- Two large double bedrooms and space on landing for desk
- Generous lounge/diner
- Modern fitted kitchen and bathroom

Accommodation

FIRST FLOOR

Large Landing

Lounge/Diner: 15'7 x 14'0 (4.75m x 4.27m)

Kitchen: 11'2 x 10'5 (3.41m x 3.18m)

Bedroom 2: 14'4 (4.37m) narrowing to 11'4 (3.46m) x 11'9 (3.58m)

Bedroom 1: 14'3 x 11'3 (4.35m x 3.43m)

Bathroom

Separate Toilet

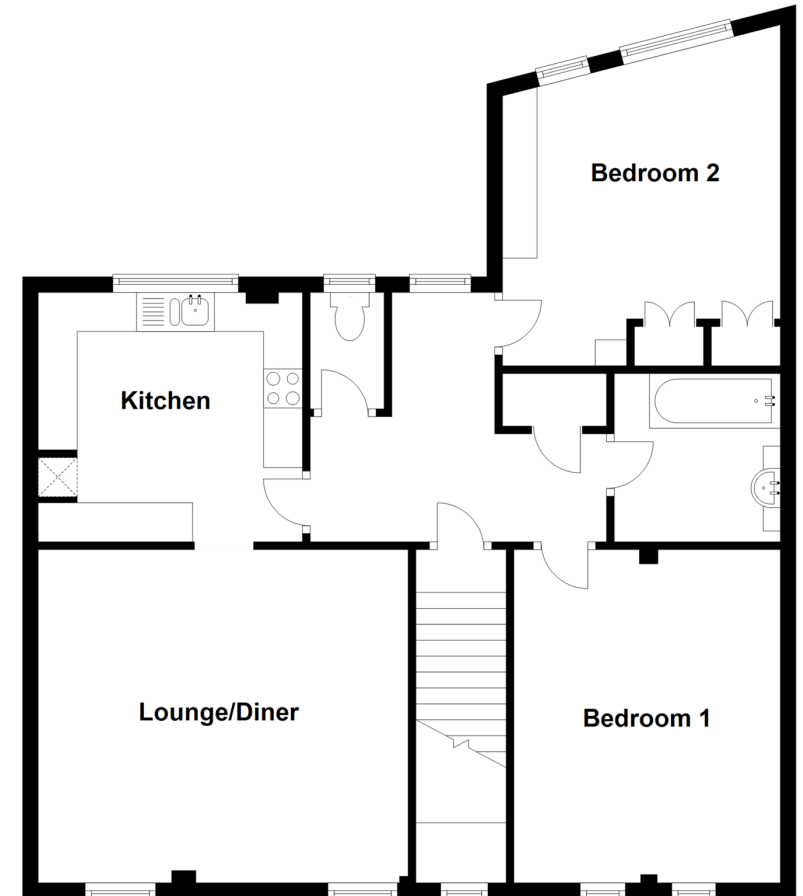
OUTSIDE

Single Garage

Allocated Parking Space

Communal Garden

First Floor
Approx. 82.7 sq. metres (890.4 sq. feet)



Call Paddock Wood - 01892 836877 ■ wardsokent.co.uk

- Legal advice should be taken to verify fixtures/fittings, planning, alterations and/or lease details
- Appliances & services are untested, dimensions are approximate and floor plans are not to scale