



Guide Price
£1,000,000

Freehold

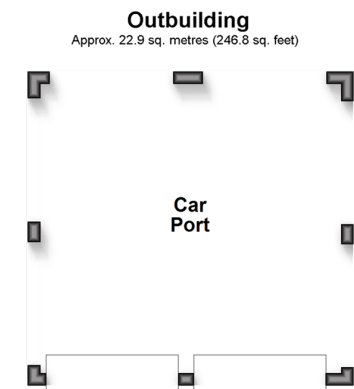
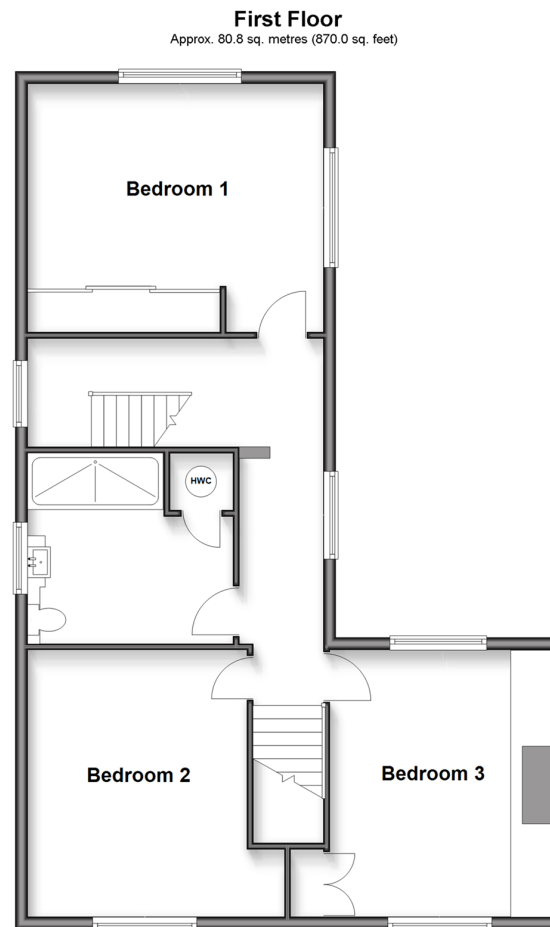
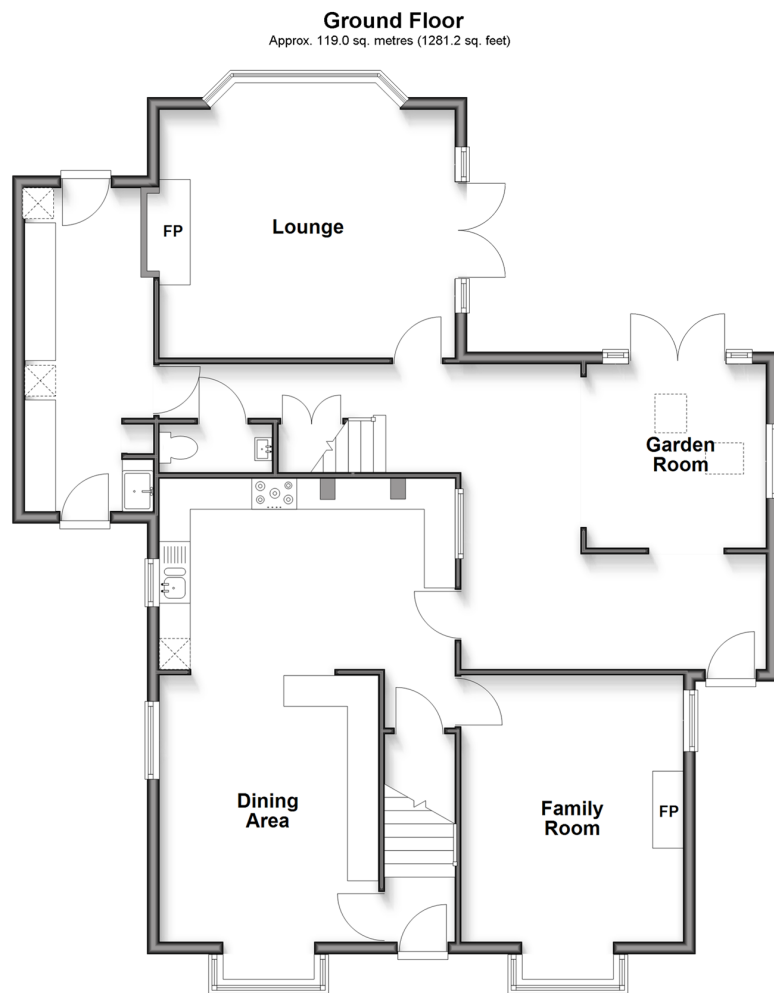
3x  2x  3x 

**Bush Road, East
Peckham, Tonbridge,
Kent, TN12**

OVER 60?

Secure this property
for up to **59% less!**

Wards
Helping you move forwards



Accommodation

GROUND FLOOR

Entrance Hall

Dining Area: 13'9 x 12'0 (4.19m x 3.66m)

Family Room: 13'2 x 11'9 (4.02m x 3.58m)

Lounge: 13'9 x 11'9 (4.19m x 3.58m)

Kitchen: 15'8 x 10'2 (4.78m x 3.10m)

Utility: 16'8 x 5'3 (5.08m x 1.60m)

Garden Room: 9'6 x 9'4 (2.90m x 2.85m)

Cloakroom

FIRST FLOOR

Bedroom 1: 16'0 x 13'2 (4.88m x 4.02m)

Bedroom 2: 14'0 x 13'9 (4.27m x 4.19m)

Bedroom 3: 13'9 x 11'9 (4.19m x 3.58m)

Bathroom: 10'5 x 9'9 (3.18m x 2.97m)

OUTSIDE

Car Port

Off Road Parking

Front & Rear Gardens

Summer house



Main features

- Breathtaking 360 degree views across fields and countryside
- A short drive from Paddock Wood mainline station and local bus routes
- Stunning landscaped gardens with fully powered summer house
- Ample parking and car port
- Offering potential for flexible living with two entrances and staircases



Nearest Schools

Primary Schools: East Peckham Primary 0.3 miles, Paddock Wood Primary 2.8 miles, Mereworth Community Primary 3.0 miles

Secondary Schools: Mascalls School 4.4 miles, The Malling



Transport Information

Train Stations: Beltring 2.0 miles, Yalding 2.4 miles, Paddock Wood 3.8 miles



Address

Bush Road, East Peckham, Tonbridge, Kent, TN12



Directions

For directions to this property please contact us.



Call Paddock Wood Branch 01892 836877 ■ wardsofkent.co.uk



- Legal advice should be taken to verify fixtures/fittings, planning, alterations and/or lease details
- Appliances & services are untested, dimensions are approximate and floor plans are not to scale
- Through a Homewise Home For Life Plan people aged 60+ can secure this property for up to 50% less, by purchasing a Lifetime Lease.



13627432/20250924/GD/GD